



# 2024 Conference

# Syllabus

**FMDA's 33<sup>rd</sup> Annual  
Conference & Trade Show  
Oct. 31-Nov. 3, 2024**



FMDA's 33<sup>rd</sup> Annual Conference is held in collaboration with the Florida Chapters of Gerontological Advanced Practice Nurses Association, National Association Directors of Nursing Administration, and Florida Geriatrics Society.

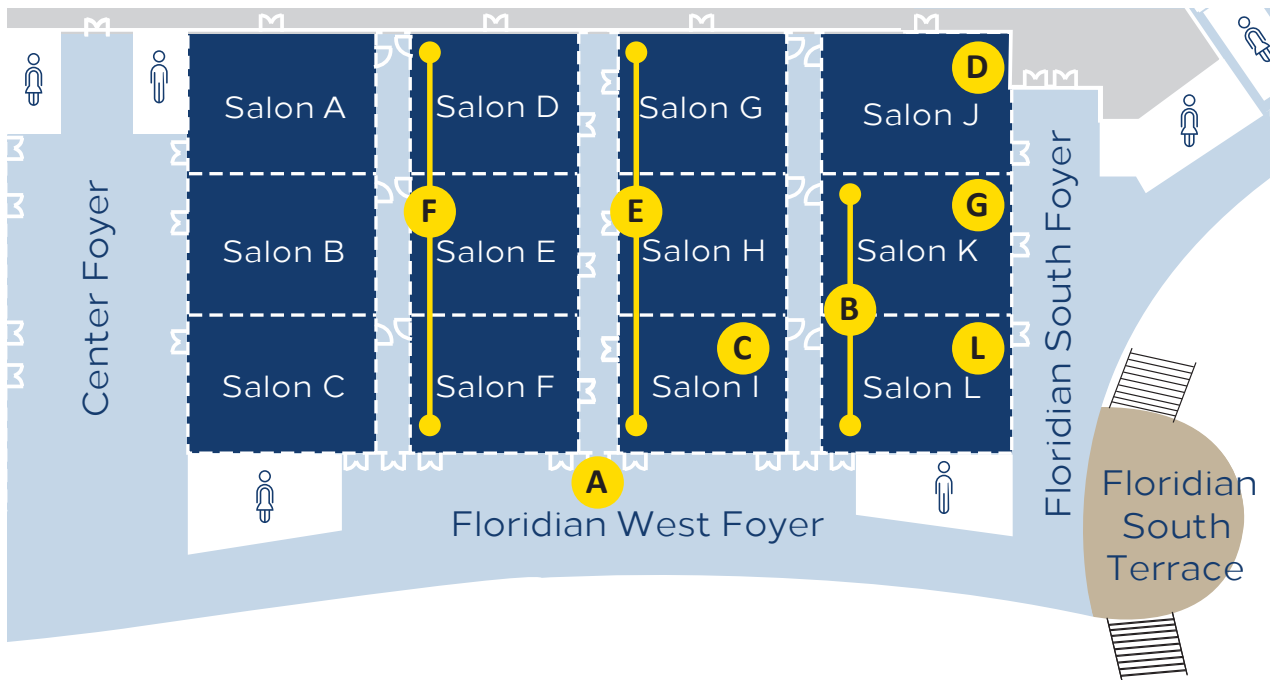


# EVENT LOCATOR MAP

## BONNET CREEK MEETING AND CONFERENCE FLOOR PLAN LOBBY LEVEL



## FLORIDIAN BALLROOM



- |  |   |
|--|---|
| <p>A. <b><u>Floridian Foyer</u></b><br/>Registration &amp; Information</p> <p>B. <b><u>Floridian KL</u></b><br/>101, 102, Fri. &amp; Sat. Product Theater Lunches</p> <p>C. <b><u>Floridian I</u></b><br/>103, 104</p> <p>D. <b><u>Floridian J</u></b><br/>FMDA Annual Membership Meeting<br/>President's Wine &amp; Cheese Reception</p> <p>E. <b><u>Floridian GHI</u></b><br/>President's Welcome<br/>105, 106, 107, 108, 109, 110, 111, 112, 113, 114, 117,<br/>118, 119, 120</p> | <p>F. <b><u>Floridian DEF</u></b><br/>Grand Opening of Trade Show &amp; Poster Presentations<br/>Exhibit Hall Welcome Reception<br/>Annual Trade Show Posters<br/>Continental Breakfast<br/>Break in Exhibit Hall</p> <p>G. <b><u>Floridian K</u></b><br/>115</p> <p>H. <b><u>Floridian L</u></b><br/>116</p> <p>I. <b><u>Taylor - Ground Level</u></b><br/>Conference Planning<br/>Committee Breakfast Meeting</p> |
|--|---|

# Table of Contents

WELCOME LETTERS.....	4-7
PROGRAM DESCRIPTION, TARGET AUDIENCE, AND OBJECTIVES.....	9
MEETING INFORMATION	
<b>Continuing Education, Education Committee, Certificates of Attendance .....</b>	<b>10-11</b>
<b>CE Credits Calculated by Session and by Profession .....</b>	<b>12</b>
<b>Conference Faculty: Speaker Biographies.....</b>	<b>13-19</b>
<b>Faculty Disclosures.....</b>	<b>10 &amp; 30</b>
SOCIAL MEDIA CONTEST .....	20
RECOGNITION OF OUR SPONSORS.....	21-22
PROGRAM & SCHEDULE OF EVENTS .....	23-30
CREDIT CLAIM INSTRUCTIONS.....	30
ANNUAL TRADE SHOW EXHIBITORS .....	32-37
2025 CALL FOR PRESENTATIONS.....	48
SESSION-BY-SESSION LEARNING OBJECTIVES.....	40-49
<b>101 – Bedside Wound Care Delivery: Beyond the Slough! .....</b>	<b>38</b>
<b>102 – Practical Workshop on Geriatric Skin Diseases Commonly Seen in PALTC .....</b>	<b>38</b>
<b>103 – Immunizations in Long-Term Care.....</b>	<b>39</b>
<b>104 – Opioid Conversion in Older Adults with Severe Pain .....</b>	<b>39</b>
<b>105 – National Transitions of Care Coalition: Reducing Avoidable Hospital Readmissions .....</b>	<b>40</b>
<b>106 – PALTmed Public Policy Update .....</b>	<b>40</b>
<b>107 – Prognosis Before Planning .....</b>	<b>41</b>
<b>108 – Diabetes Management in PALTC – A Brief Update .....</b>	<b>41</b>
<b>109 – Endocrinology Pearls for the PALTC Practitioner .....</b>	<b>42</b>
<b>110 – An Update on Geriatric Syndromes in LTC .....</b>	<b>42</b>
<b>111 – National Leaders Forum .....</b>	<b>43</b>
<b>112 – Best Practices to Optimizing Patient End-of-Life Outcomes .....</b>	<b>43</b>
<b>113 – Advance Directives 2024 Update .....</b>	<b>44</b>
<b>114 – State Regulatory Update .....</b>	<b>44</b>
<b>115 – Medicare Billing &amp; Coding Update .....</b>	<b>45</b>
<b>116 – Strategies for Obtaining Needed Medications When Health Plans Restrict Access .....</b>	<b>45</b>
<b>117 – Anticoagulants in Older Adults .....</b>	<b>46</b>
<b>118 – Geriatric Literature Review .....</b>	<b>46</b>
<b>119 – Psychotropic Stewardship: Stay Compliant with Current Regulations .....</b>	<b>47</b>
<b>120 – Animal-Assisted Therapy in PALTC .....</b>	<b>47</b>
<b>Poster Presentations.....</b>	<b>49-52</b>

## PALTmed AMDA/FMDA Disclosure

Registrants for this program understand that medical and scientific knowledge are constantly evolving. The views and treatment modalities of the instructors are their own and may reflect innovations (including off-label or investigational use of medical products) and opinions not universally shared. Every effort has been made to assure the accuracy of the data presented at this program in the context of accepted medical practice. Prior to clinical application, physicians should check specific details such as drug doses and contraindications, off-label uses, or other details in standard sources. The views and treatment modalities of the instructors are not those of the PALTmed or FMDA, but are presented in this forum to advance scientific and medical education. Registrants waive any claim against PALTmed/FMDA arising from information presented at this program.



3123 BREAKWATER COURT  
WEST PALM BEACH, FL 33411

Oct. 31, 2024

Dear Friends and Colleagues:

Welcome to our 33<sup>rd</sup> Annual Conference! We are very glad you're here. FMDA has witnessed the explosive growth of an organization that is dedicated to serving and representing its members. Membership is strong, and our influence is making more of an impact than ever.

FMDA remains committed to ensuring that its members have access to the latest information, opportunities for educational advancement, and the framework to advocate the positions that will benefit our profession and our patients.

Our annual conference has evolved into a regional gathering with national impact for medical directors, attending physicians, advanced practice nurses, consultant pharmacists, physician assistants, directors of nursing, and administrators working in the PALTC continuum. It provides an opportunity to network and enjoy educational seminars from some of the top names in their areas of expertise.

We are always striving to improve and we welcome your feedback. This is your association and your annual conference. Please take a few minutes to review the information in this syllabus and familiarize yourself with the events, how to earn continuing education credits, and the format of the meeting.

The registration and information desk will be open all day on Thursday, Friday, Saturday, and on Sunday until noon. FMDA staff members will be available to answer any questions you may have.

In order to claim credit, use FMDA's online process for the session and conference evaluation. You can earn credit for the sessions you attend, and a certificate of attendance will be issued, but we ask you to complete this process online. This online system applies to all attendees. See the instructions in the syllabus on page 30 and scan the QR code to get started.

We invite you to attend product theater lunch programs on Friday, sponsored by **Neurocrine**; and on Saturday, sponsored by **Otsuka America Pharmaceutical, Inc.** and **Lundbeck**. Our thanks to these companies for their support!

Join us on **Friday at 4:30 p.m.** at the official Welcome Reception in the exhibit hall in **Floridian DEF**, sponsored by **VITAS Health Care** – the **33<sup>rd</sup> Annual Conference Diamond Sponsor**. While at the Trade Show, take the opportunity to see some of the latest products and innovations by visiting each of the companies that help make this conference possible.

Make sure your Trade Show Card is initialed by each of the companies represented to be eligible to win some of the door prizes to be awarded after the last session on Sunday. Drop your completed card into the box before you leave the exhibit hall on Saturday. Remember: You must be present at the end of the conference to win!

Also, our thanks go to Bronze Grande Sponsors – **Psych Health Associates** and **Sound Long-Term Care Management**.

Be sure to join us for the President's Wine & Cheese Reception from **5 to 6:15 p.m.** on Saturday. Spend time with your friends and colleagues at this fun and relaxed event. Then celebrate as we announce the winner of this year's **Robert Kaplan Quality Champion Award**. Our thanks to **The Kaplan Family** for sponsoring this year's award program.

Again, welcome to **Best Care Practices in the Post-Acute and Long-Term Care Continuum 2024**. This year's program is outstanding, so we hope you enjoy yourselves! Congratulations go out to this year's dynamic team: Dr. Niharika Suchak, Chair; Dr. Brianna Wynne, Vice Chair, Education Committee and Program Director; members of the Education Committee; and FMDA's staff. They have all put a tremendous amount of effort into making this conference interesting, educational, and fun.

We hope you find the conference to be a valuable asset to your professional life. Enjoy!

*Executive Committee, FMDA – The Florida Society for Post-Acute and Long-Term Care Medicine*

President: **Shark Bird, MD, CMD**

Chair: **Angel Tafur, MD, CMD**

Vice President/President-Elect: **Alfonso Rodriguez, MD**

Immediate Past-President: **Diane Sanders-Cepeda, DO, CMD**

Secretary/Treasurer: **F. Michael Gloth III, MD, FACP, AGSF, CMD**



(561) 689-6321 ❖ FAX: (561) 689-6324 ❖ WWW.FMDA.ORG ❖ WWW.BESTCAREPRACTICES.ORG



*Welcome to Best Care Practices in the Post-Acute and Long-Term Care Continuum 2024!*

The Florida Chapters of GAPNA would like to extend a warm welcome to all the Advanced Practice Nurses attending this year's *Best Care Practices in the Post-Acute and Long-Term Care Continuum 2024* conference.

FMDA, in collaboration with FL-GAPNA and other professional associations, has put together a well-rounded curriculum for all of us caring for the older adult in PALTC. This will be an exciting four days for all those attending.

We, as advanced practice registered nurses, embrace the opportunity to work with FMDA and participate in planning this wonderful conference. Our collaboration with physicians, pharmacists, directors of nursing, and other health care professionals is critical and essential for the betterment of our geriatric patients and loved ones. Our annual participation has provided a great opportunity to enhance knowledge and nurture mutual respect for others working in this arena.

We encourage all advanced practice registered nurses to become involved with both Florida Chapters of GAPNA. Please visit our websites at [flgapna.enpnetwork.com](http://flgapna.enpnetwork.com) as well as [fgcgapna.enpnetwork.com](http://fgcgapna.enpnetwork.com) and become a member.

Also, please visit [www.gapna.org/learning/events/pharmacology-conference](http://www.gapna.org/learning/events/pharmacology-conference) for information about GAPNA's next annual pharmacology conference, Thursday, March 6, 2025 - Saturday, March 8, 2025, in Nashville, TN.

On behalf of the Florida Chapters of GAPNA, we welcome you!

Sincerely,

Michelle Lewis, DNP, APRN, FNP-C, GNP-C, PMHNP-BC  
President, FL-GAPNA



Dear FMDA Friends and Annual Program Attendees:

The Florida Geriatrics Society is honored to join you for the 33rd Annual Best Care Practices in the Post-Acute and Long-Term Care Continuum Conference. We look forward to seeing many of our FMDA friends and FGS members during this meeting and treasure the opportunity to learn alongside you. For those supporting the health and well-being of seniors, continual collaboration is essential, and only through this relationship may we hope to improve the care of older Floridians. Through organized medicine, we find ourselves capable of achieving far more than any of us could ever do alone, and as our rapidly changing medical profession has advanced, it is precisely this collaboration that allows us to maintain the excellent care seniors deserve.

As we unite to address the educational and healthcare challenges facing those caring for our aging population, FGS is pleased to continue its collaborative relationship with FMDA. We work closely with the American Geriatrics Society and the Health in Aging Foundation to accomplish this mission through interdisciplinary professional teamwork, educational initiatives, community advocacy, public policy, and other collaborative efforts. However, our shared mission with FMDA is uniquely important. It is one devoted to improving the quality of life and advancing the healthcare of older adults through education, research, and networking. By enhancing public awareness of the challenges, obstacles, and needs faced by professionals caring for older adults, we can bring greater positive outcomes to everyday practice. Our partnership with FMDA is vital to both our organizations' missions, and we consider that relationship to be one of our most valuable assets.

FGS recently celebrated its 35th Anniversary Meeting on October 5th and 6th, marking over three decades of geriatrics leadership and commitment to both older Floridians and those who care for them. At FMDA's 33rd Annual Meeting, we are reminded that our organizations share a long-standing history of dedication to improving geriatric care in Florida, and we look forward to standing alongside you for many more decades.

To learn more about our organization and the benefits of membership, or how you can get involved in our advocacy, education, or outreach efforts, visit our website at: [www.floridageriatricsociety.org](http://www.floridageriatricsociety.org).

We look forward to seeing you at our 2025 Annual Meeting, on June 22-23 in beautiful Clearwater Beach!

Gregory Sullivan, MD, FAPA  
President, Board of Directors, Florida Geriatrics Society

P. O. Box 1403  
Land O Lakes, FL 34639

[www.FloridaGeriatricsSociety.org](http://www.FloridaGeriatricsSociety.org)

813-996-0322



Oct. 31, 2024

Dear Colleagues,

Welcome to Best Care Practices in the Post-Acute and Long-Term Care Continuum 2024 – FMDA’s 33<sup>rd</sup> Annual Conference!

The National Association of Directors of Nursing (NADONA) is very proud to be involved with this wonderful conference.

Having just recently joined the Education Committee, I find that the committee has been hard at work developing an exciting and informational conference for you. I have witnessed rapid responsiveness when it comes to meeting different challenges with speakers and topics. The Education Committee has provided exceptional programming for this conference.

NADONA is once again honored to work with Ian Cordes, FMDA – The Florida Society for Post-Acute and Long-Term Care Medicine, AMDA – The Society for Post-Acute and Long-Term Care Medicine, Florida Geriatrics Society, FADONA, and the Florida Chapters of GAPNA on this remarkable program!

After attending this program, we hope you will gain as much knowledge and respect for each other as I have witnessed working with these organizations.

Enjoy the speakers, meet new friends, rekindle seasoned relationships, and recharge so you can take home all the new and exciting ideas you gained while attending this program and put them into practice!

On behalf of Robin Arnicar, NADONA President, and the NADONA Board of Directors,

Most Sincerely,

Cindy Fronning, RN, GERO-BC, IP-BC, AS-BC, RAC-CT, CDONA, FACDONA, EFLP, CALN, QAPI-BC  
Master Trainer  
NADONA Executive Director

[cindy@nadona.org](mailto:cindy@nadona.org)

651-324-8415 – Direct Line



# VITAS: Your Partner for Excellence in Senior Living Communities

When you partner with VITAS® Healthcare, your patients gain access to our dedicated interdisciplinary care teams who are equipped with the expertise to provide tailored care. Your patients deserve nothing but the best, and VITAS delivers excellence at every step of the way.



## Around-the-Clock Clinical Support

We offer 24/7/365 clinical care support, ensuring that physicians, hospitals, and senior living communities always have access to our expertise. When your team needs us, we're available, ready to provide the care your patients require.



## Complex Hospice Modalities

VITAS offers complex modalities to address the unique needs of your patients. We understand that every patient is different, and our customized approach ensures that care is precisely tailored to them.




## Advance Care Planning

We're partners in achieving patient-centered care goals. Our expertise extends to advance care planning, goal-concordant patient care, and the meticulous tracking of industry metrics.

Together, we'll ensure that your patients receive the care they deserve, in line with their wishes and your senior living communities high standards.

**Give us a call and partner with VITAS today.**

**VITAS**  
Healthcare

VITAS.com   
Since 1980



Scan the  
QR code to  
learn more



## Annual Program Description

This program is designed to provide a review and update of major geriatric diseases, illnesses, and risks found in nursing home patients, residents of assisted-living facilities, those under hospice care, and seniors living at home. Topics covered this year include: ❖ Advance Directives 2024 Update ❖ Animal-Assisted Therapy in PALTC ❖ Anticoagulants in Older Adults ❖ Diabetes Management in PALTC ❖ Endocrinology Pearls ❖ Geriatric Literature Review ❖ Immunizations in LTC ❖ Medicare Billing & Coding ❖ National Leaders Forum ❖ Optimizing Patient End-of-Life Outcomes ❖ Prognosis ❖ Psychotropic Stewardship ❖ Public Policy ❖ Reducing Avoidable Hospital Readmissions ❖ State Regulatory Update ❖ Update on Geriatric Syndromes in LTC ❖ Workshop: Bedside Wound Care Delivery: Beyond the Slough! ❖ Practical Workshop on Geriatric Skin Diseases Commonly Seen in LTC.

## Target Audience

This conference is designed to educate physicians, advanced practice nurses, senior care pharmacists, consultant pharmacists, physician assistants, directors of nursing in LTC, registered nurses, and long-term care administrators; as well as geriatricians, primary care and home care physicians, physicians considering becoming long-term care medical directors, hospice medical directors, or home care medical directors; and others with an interest in PALTC and its continuum of care. The faculty includes national and regional authorities in the fields of post-acute and long term care medicine, medical direction, senior care pharmacology, and geriatric medicine.

## Annual Program Objectives

*Upon completion of the Best Care Practices in the Post-Acute and Long-Term Care Continuum conference, participants should be able to:*

1. Discuss the professional challenges facing medical directors, attending physicians, advanced practice nurses, consultant pharmacists, physician assistants, directors of nursing, and administrators practicing in the continuum.
2. Describe the advances in theoretical and clinical knowledge impacting individuals affected by medical issues in the PALTC continuum.
3. Discuss the current and emerging national issues and public policy efforts of PALTmed – The Society for Post-Acute and Long-Term Care Medicine, Gerontological Advanced Practice Nurses Association, and American Society of Consultant Pharmacists.
4. Describe examples of evidence-based practice and multidisciplinary approaches to enhance outcomes in various health care settings.
5. List examples of evidence-based practice as it pertains to post-acute and long-term care medicine.



# Continuing Education

Oct. 31-Nov. 3, 2024 ☆ Signia by Hilton Orlando Bonnet Creek ☆

**EDUCATION COMMITTEE CHAIR:** Niharika Suchak, MBBS, MHS, FACP, AGSF

**PROGRAM DIRECTOR:** Brianna Wynne, MD; Vice Chair, Education Committee

**NADONA LIAISON:** Cynthia Fronning, RN, GERO-BC, CDONA, FACDONA, RAC-CT, IP-BC, AS-BC, CALN, EFLA, QAPI-BC; Executive Director

**FLORIDA CHAPTERS OF GAPNA LIAISON:** Michelle Lewis, DNP, MSN, ARNP, FNP-BC, GNP-BC; President, FL-GAPNA

**FLORIDA GERIATRICS SOCIETY LIAISON:** F. Michael Gloth, MD, FACP, AGSF, CMD; Immediate Past-President, FGS

**CONSULTANT PHARMACIST LIAISON:** Rick Foley, PharmD, CPh, BCGP, FASC; Past-Chair, FL-ASCP

**COMMITTEE MEMBERS:** Shark Bird, MD, CMD, CWSP; Deb Danforth, DNP, APRN, FAANP; Alfonso Gonzalez-Rodriguez, MD; Elizabeth Hames, DO, CMD; Elizabeth Hidlebaugh, MD; Leonard Hock Jr., DO, MACOI, CMD; Brian Kiedrowski, MD, MBA, CPE; Simone Minto-Pennant, PharmD, BCPS, CPh; Jennifer Moses, DNP, CRNP; Samantha Quigley, PharmD, CPh, BCGP; Bernardo Reyes, MD, CMD, AGSF; Kenya Rivas, MD, FAAFP, CMD; Michael Samarkos, PharmD; Diane Sanders-Cepeda, DO, CMD; Angel Tafur, MD, CMD; Lauren Tafur, ARNP; Melanie Trigo, PharmD; Padma Vedantam, MD; and Laurie Sheffield Workman, ARNP, DNS

**TRAINEE LEADERSHIP COUNCIL:** Karley Deason, Preclinical Medical Student; Saurav Kiri, First-Year Medical Student; Dr. Lakshmi Koneru, PGY-2 Resident, Family Medicine, Community Health of South Florida (CH); Paige Rhein, PharmD Candidate, 2026; and Guinevere Sampson, PharmD Candidate, 2024

## EDUCATION COMMITTEE DISCLOSURES

Speakers are required to provide verbal disclosure prior to each talk. If the learner perceives any bias toward a commercial product or service, please report this to the Society's staff. According to the Society and ACCME policy, all those in a position to control content are required to disclose any relevant financial relationships. Please note that in addition to being presented with disclosure information about faculty, the same disclosure information is required of all Education Committee members — our planning committee. Where there are no financial interests indicated, the faculty or planning committee member had none to report. In the spirit of full disclosure, no member of this committee is a compensated conference speaker at Best Care Practices in the Post-Acute and Long-Term Care Continuum 2024. No one with the ability to control content of this activity has a relevant relationship with an ineligible company.

## CERTIFICATES OF ATTENDANCE

In order to claim credit for the sessions you attend, see the instructions on page 30. The session evaluations and the conference evaluation must be completed online before you receive your Certificate of Attendance by email.

## CONTINUING MEDICAL EDUCATION FOR PHYSICIANS (MDs and DOs), PHYSICIAN ASSISTANTS, AND ADVANCED PRACTICE NURSES

### Accreditation Statement:

This activity has been planned and implemented in accordance with the accreditation requirements and policies of the Accreditation Council for Continuing Medical Education (ACCME) through the joint providership of Post-Acute and Long-Term Care Medical Association and FMDA – The Florida Society for Post-Acute and Long-Term Care Medicine. Post-Acute and Long-Term Care Medical Association is accredited by the ACCME to provide continuing medical education for physicians.



### Credit Designation Statement:

Post-Acute and Long-Term Care Medical Association designates this live activity for a maximum of **23.0** AMA PRA Category 1 Credit(s)<sup>™</sup>. Physicians should claim only the credit commensurate with the extent of their participation in the activity.

### ABPLM CMD Credit Designation Statement:

This CME activity has been pre-approved by the American Board of Post-Acute and Long-Term Care Medicine (ABPLM) for a total of **10.25** management hours and **12.75** clinical hours toward certification or recertification as a Certified Medical Director (CMD) in post-acute and long-term care medicine. The CMD program is administered by the ABPLM. Each physician should claim only those hours of credit actually spent on the activity



**Physicians (MDs and DOs) & Physician Assistants**

This program has been approved by the Florida Board of Medicine, Florida Board of Osteopathic Medicine, and Florida Physician Assistants CE Broker Program Tracking #20-1259172.

**American Osteopathic Association Credit:** AOA recognizes this activity for *AMA PRA Category 1 Credit™* as *AOA Category 2 Credit*.

**Physician Assistants and Nurse Practitioners:** These credits have been designated as *AMA PRA Category 1 Credits™* by an ACCME-accredited organization and are applicable to these certifications.

**Contact Hours for Advanced Practice Nurses, Nurse Administrators, Florida Licensed Nurses, and Long-Term Care Administrators**

This educational program has been submitted to Florida Association Directors of Nursing Administration/LTC – Florida Department of Health, Division of Medical Quality Assurance (Florida Board of Nursing/Florida Board of Nursing Home Administrator CE Broker Provider ID Number 50-682) for a total of **23\*** contact hours of continuing education and 23\* maximum participant hours. This program has NOT been submitted to or approved by an accredited approver of continuing nursing education by the American Nurses Credentialing Center’s Commission on Accreditation (ANCC). CE Broker Tracking #20-1259191



\* Subject to final approval.

**Pharmacist Continuing Education**

General Pharmacist Credit: The Association for Medication Education (AME) is accredited by the Accreditation Council for Pharmacy Education as a provider of continuing pharmacy education. This knowledge-based program has been approved for **23** contact hours. **Session 115 is NOT approved for pharmacist CE.**



Each individual session of this conference has received a separate Universal Activity Number (UAN). Details related to learning objectives, speakers, and UAN numbers for each session will be provided when you register onsite. ACPE credit is for pharmacists only.

**This activity has been approved by the Florida Board of Pharmacy CE Broker Program Tracking #20-1258056.**

**Universal Activity Numbers**

Thursday	Hours	Friday	Hours	Saturday	Hours	Sunday	Hours
101 0854-9999-24-036-L04-P	2	105 0854-9999-24-040-L04-P	1	111 0854-9999-24-046-L99-P	1.5	117 0854-9999-24-051-L01-P	1
102 0854-9999-24-037-L01-P	2.5	106 0854-9999-24-041-L04-P	1	112 0854-9999-24-047-L99-P	1	118 0854-9999-24-052-L99-P	1.5
103 0854-9999-24-038-L06-P	1	107 0854-9999-24-042-L04-P	1	113 0854-9999-24-048-L99-P	1.5	119 0854-9999-24-053-L01-P	1
104 0854-9999-24-039-L08-P	1	108 0854-9999-24-043-L01-P	0.75	114 0854-9999-24-049-L03-P	1	120 0854-9999-24-054-L99-P	1.25
		109 0854-9999-24-044-L01-P	1	116 0854-9999-24-050-L04-P	1		
		110 0854-9999-24-045-L01-P	1				

**Florida Consultant Recertification:** Accreditation of the program for consultant pharmacist recertification is pending at the time of brochure printing.



\*Block sessions run consecutively so you must attend every session, even if it runs into the following day.

**Call for Presentations**

The Education Committee for Best Care Practices in the PALTC invites you to submit speaker presentation proposals and abstracts for the 2025 annual conference.

Submission Site Opens: **Dec. 30, 2024**  
 Speaker Presentation Submission Deadline:  
**Feb. 17, 2025**

Contact the FMDA business office at  
 (561) 689-6321 for additional information.



To access the complimentary  
 Wireless Internet in the  
 Conference Center’s Meeting Rooms:  
 Select: **Bonnet Creek\_Meeting**  
 and the password will be **FMDA2024**.



## Continuing Education Credits Calculated by Profession

	<u>Session Title/No.</u>	<u>MD/DO/NP/PA/CMD</u>	<u>ACPE</u>	<u>NP/RN*</u>	<u>NHA</u>
<b>Thursday</b>	101 Bedside Wound Care Delivery: Beyond the Slough!	(2 hours) CLINICAL	2.0	2.0	2.0
	102 Practical Workshop on Geriatric Skin Diseases Commonly Seen in PALTC	(2.5 hours) CLINICAL	2.5	2.5	2.5
	103 Immunizations in Long-Term Care	(1 hour) MANAGEMENT	1.0	1.0	1.0
	104 Opioid Conversion in Older Adults with Severe Pain	(1 hour) CLINICAL	1.0	1.0	1.0
<b>Friday</b>	105 National Transitions of Care Coalition: Reducing Avoidable Hospital Readmissions	(1 hour) MANAGEMENT	1.0	1.0	1.0
	106 PALTmed Public Policy Update	(1 hour) MANAGEMENT	1.0	1.0	1.0
	107 Prognosis Before Planning	(1 hour) MANAGEMENT	1.0	1.0	1.0
	108 Diabetes Management in PALTC – A Brief Update	(.75 hour) CLINICAL	.75	.75	.75
	109 Endocrinology Pearls for the PALTC Practitioner	(1 hour) CLINICAL	1.0	1.0	1.0
	110 An Update on Geriatric Syndromes in LTC	(1 hour) CLINICAL	1.0	1.0	1.0
<b>Saturday</b>	111 National Leaders Forum	(1.5 hours) MANAGEMENT	1.5	1.5	1.5
	112 Best Practices to Optimizing Patient End-of-Life Outcomes	(1 hour) CLINICAL	1.0	1.0	1.0
	113 Advance Directives 2024 Update	(1.5 hours) MANAGEMENT	1.5	1.5	1.5
	114 State Regulatory Update	(1 hour) MANAGEMENT	1.0	1.0	1.0
	115 Medicare Billing & Coding Update	(1 hour) MANAGEMENT	0	1.0	1.0
	116 Strategies for Obtaining Needed Medications When Health Plans Restrict Access	(1 hour) MANAGEMENT	1.0	1.0	1.0
<b>Sunday</b>	117 Anticoagulants in Older Adults	(1 hour) CLINICAL	1.0	1.0	1.0
	118 Geriatric Literature Review	(1.5 hours) CLINICAL	1.5	1.5	1.5
	119 Psychotropic Stewardship: Stay Compliant with Current Regulations	(1 hour) CLINICAL	1.0	1.0	1.0
	120 Animal-Assisted Therapy in PALTC	(1.25 hours) MANAGEMENT	1.25	1.25	1.25
<u>Total CME/CE hours approved:</u>		24.0	23.0	24.0	24.0
<u>Maximum CME/CE hours to be earned:</u>		23.0	23.0	23.0	23.0

May be subject to rounding.

# FMDA's 33<sup>rd</sup> Annual Conference Faculty

## Alex Bardakh, MPP, PLC, CAE

Alex Bardakh is the senior director of advocacy and strategic partnerships for PALTmed – The Society for Post-Acute and Long-Term Care Medicine. Mr. Bardakh works for the society's extensive public policy agenda through advocacy in Congress and numerous federal agencies. He is a thought leader in the field and represents the organization with a variety of coalitions and industry partners. Mr. Bardakh has a master's degree in public and legal policy and more than 15 years of experience in specialty society executive leadership focusing on advocacy and strategic growth of organizations. He is a certified association executive through the American Society for Association Executives, has a certificate in nonprofit financial management, and has been a recognized speaker throughout the country.

## Shark Bird, MD, CMD

Dr. Shark Bird is a certified medical director with PALTmed – Post Acute and Long-Term Care Medical Association. He served as chief medical officer for the nation's largest provider of wound physicians in the post-acute setting and spearheaded the writing and development of their yearlong fellowship program.

Dr. Bird attended graduate school at Ball State University in Muncie, IN, and medical school at Marshall University School of Medicine in Huntington, WV. He completed his residency in family medicine at West Virginia University/CAMC in Charleston, WV, before beginning his solo practice in rural West Virginia. He currently serves on the Advisory Council for the College of Health at Ball State University and as an adjunct faculty for Nova Southeastern University in Florida.

With a long-standing interest in geriatric medicine and international tropical medicine following years of mission work in West Africa, Dr. Bird began a full-time wound care career in 2004. He is the author of numerous publications and presents at conferences throughout the U.S. and abroad educating clinicians on wound care in the post-acute space.

## Pari Deshmukh, MD, FASA, FASAM

Dr. Pari Deshmukh graduated from the psychiatry residency program of University Hospitals Case Medical Center, where he served as a chief resident, and completed certificate courses in various psychotherapy treatment modalities. He is triple board certified in general psychiatry, addiction medicine, and integrative holistic medicine and is a fellow of the American Psychiatric Association (APA) and American Society of Addiction Medicine.

Dr. Deshmukh has received various awards and published and presented his work at reputed journals and conferences. In 2024, he was honored with a Distinguished Fellow award from APA. He has worked in various settings such as medical hospitals, clinics, nursing homes, assisted-living facilities, and group homes.

In 2016, Dr. Deshmukh started his company, Balanced Wellbeing, and focused on servicing nursing homes and assisted-living facilities in Central Florida. Under his leadership, Balanced Wellbeing employs over 125 full-time healthcare providers and provides services to over 400 facilities. Balanced Wellbeing is now the largest psychiatry care company for geriatric patients in nursing homes and assisted-living facilities in the state of Florida and is making a significant impact on the mental health of the geriatric patient population.

## James Dickens, PharmD

Dr. James Dickens has over 25 years of experience as a clinical consultant pharmacist with Omnicare, where he has been a vital part of optimizing medication management and improving outcomes in long-term care settings. With 27 years of experience working across skilled-nursing facilities, assisted-living communities, and intermediate-care facilities, he brings a wealth of knowledge and expertise to the field. Dr. Dickens holds a doctor of pharmacy from the University of Florida in Gainesville.

## Timothy Earley, NP-C

Timothy Earley is a nurse practitioner with four years of specialized experience in burn, wound, and reconstructive surgery. He practices across the Commonwealth of Virginia, serving as a wound care specialist in long-term care settings. His expertise stems from his hands-on experience as a registered nurse, where he provided critical care to burn patients at a mid-Atlantic Level 1 academic trauma center. This role allowed him to develop a deep understanding of complex wound management. With a passion for education, he has trained numerous healthcare professionals in advanced burn life support, emphasizing the importance of skill development and lifelong learning. Dedicated to advancing patient outcomes and professional growth, Mr. Earley continues to make a significant impact in the field of wound care.

### **Hiral Naik Gallimore, MD**

Dr. Hiral Gallimore graduated from the Medical University of Lublin, Poland, in 2009 and trained at the University of North Carolina at Chapel Hill and Virginia Commonwealth University in general and burn surgery. She found her niche in providing wound care to residents in long-term care facilities and joined Vohra Wound Physicians in 2014.

At Vohra, she has been the director for the tenured fellowship program for over a year and is a moderator for the weekly peer review called Shared Learning. She has acted as a trainer for new Virginia doctors as well as leading virtual debridement modules for all new hires.

Recently, Dr. Gallimore has discovered a penchant for telemedicine and has spent long hours trying to optimize providing wound care through a computer screen. She is incredibly enthused to bring these services directly into people's homes.

### **Elizabeth Hames, DO, CMD**

Dr. Elizabeth Hames is a medical director for Optum. She is a member of FMDA – The Florida Society for Post-Acute and Long-Term Care Medicine and serves on the Board of Directors and Education Committee. She is a past and incoming editor for FMDA's *Progress Report* newsletter.

### **Leonard Hock, DO, CMD, MACOI, FAAHPM**

Dr. Leonard Hock is a palliative consultant in Orlando, FL. He had a special focus and interest in geriatrics and end-of-life care, with board certifications in internal medicine and hospice/palliative care. Dr. Hock is a certified medical director of long-term care facilities and has been an active member of the American Medical Directors Association (PALTmed) since 1996 at both local and national levels. He was a member of the Board of Directors of PALTmed from 2008 to 2010 and chair of the National Membership Committee.

Dr. Hock's interest in hospice/palliative care resulted in the development of a palliative case management model for acute care hospitals. This model was implemented in the Research Medical Center in Kansas City in 2008 and has proven to be successful in decreasing length of stay and acute care costs while increasing comfort measures for the end-of-life patient and support to family members. During his medical career in Kansas City, Dr. Hock was the health care reporter for FOX 4 Television News. For 13 years he was seen daily on House Calls by thousands of viewers who watched him speak on current and pertinent health topics. He continues to be a frequent local, regional, and national presenter on medical, scientific, and cultural issues.

Dr. Hock served his country in Vietnam as an army medic. He graduated from the Kansas City College of Osteopathic Medicine in 1976 and completed his internship in Dallas, TX, and internal medicine residency in Kansas City. In June 2009 Dr. Hock was elected a master fellow in the Gillum Society of Master Fellows, the highest honor awarded by the American College of Osteopathic Internists for outstanding contribution and service in his profession. Dr. Hock's energy and interest is in medical direction and the improvement in patient care through active physician leadership.

### **Eric S. Kane, Esq.**

Eric Kane is a member of the Florida Bar who has been practicing law for 20 years in the areas of estate planning, probate and trust administration, and charitable planning. He frequently lectures on the topics of estate planning, probate administration, and healthcare-related matters. He has authored a section in a course manual on revocable trusts, estate tax planning, and use of irrevocable trusts in Florida, titled "New Era of Estate Planning in Florida," for Lorman Educational Services and an article titled "What Every Estate Planning Attorney Should Know about Florida Homestead Law," for Wealth Counsel's Quarterly edition.

Mr. Kane has been recognized as the American Cancer Society National Professional Advisor of the Year (2019 and 2022); the University of Miami Planned Giving Council Advisor of the Year (2018); Super Lawyers Top Rated Estate Planning and Probate Attorney, South Florida (2021-2024); Super Lawyers Florida Rising Stars (2017-2018). In addition, he has a perfect 10.0 rating from attorney rating service AWO.

He is a current or past member of American Cancer Society Nationwide Gift Planning Advisory Council (past-chair); Greater Miami Jewish Federation Foundation Board; Professional Advisory Board for the University of Miami Office of Planned Giving; Franklin and Marshall College Alumni Board of Directors; and Florida International University College of Nursing Advisory Board. He was appointed as a special magistrate, court-appointed receiver, and guardian/attorney/administrator ad litem in the Eleventh Judicial Circuit Court for Miami-Dade County.

Mr. Kane is a graduate of the American College of Trust and Estate Counsel Florida Fellows Institute and graduated cum laude with a JD and LL.M. from the University of Miami School of Law in Coral Gables, FL.

### **Rajeev Kumar, MD, CMD**

Dr. Rajeev Kumar is a Chicago-based geriatrician who has worked in PALTC for over 20 years. He is the chief medical officer for Symbria in Warrenville, IL. The president of PALTmed, formerly known as AMDA – The Society for Post-Acute and Long-Term Care Medicine, Dr. Kumar provides medical direction to several facilities and has served as state president for the Illinois Medical Directors Association. He is certified in internal medicine, geriatric medicine, and hospice and palliative medicine.

### **Cheri A. Lattimer, RN, BSN**

Cheri Lattimer serves as executive director for the National Transitions of Care Coalition and president/CEO of Integrity Advocacy & Management. Her leadership in quality improvement, case management, integrated health care, care coordination, and transitions of care is known on the national and international landscape. She is affiliated with various professional organizations and maintains active roles on several national boards and committees, including URAC's Health Standards Committee and Health Equity Council, CMS Caregiver Workgroup, American Board of Quality Assurance and Utilization Review Physicians (ABQAURP) Board of Directors and ABQAURP CME Committee, Alliance for Health Innovation, and the engage with HEART Project.

### **Rob Leffler, RPh, BCGP, FASCP**

Rob Leffler is the vice president of clinical services for Synchrony Pharmacy, a long-term care pharmacy that serves over 30,000 residents in 15 states and Washington, DC. Rob has spent the majority of his career in long-term care running pharmacies, as a consultant pharmacist, and leading clinical teams in the care of residents. As a pharmacist, he has participated as an educator for many organizations at their live meetings and through webinars. A board-certified geriatric pharmacist, he is a member of the Board of Directors and fellow of the American Society of Consultant Pharmacists (ASCP). Most recently, he was elected president-elect of ASCP. Congratulations!

### **David Alan LeVine, MD, CMD**

Dr. David LeVine is a board-certified geriatrician in private practice with MDVIP and chief medical officer of Menorah Life in St. Petersburg, FL. He has been medical director at Menorah Life's Marion and Joseph Samson 180-bed skilled-nursing facility for the past 33 years. In 2016, he received the national PALTmed Medical Director of the Year Award. In 2022, he received the Quality Champion Award from FMDA – The Florida Society for Post-Acute and Long-Term Care Medicine for dedication, leadership, engagement, and innovation.

Dr. LeVine has served as a geriatric preceptor for three separate residency programs in the St. Petersburg area. He is also a regular speaker for University at Sea, with an upcoming lecture tour cruising to Israel, Egypt, Turkey, and Greece.

### **Janet Mackenzie, MD**

Dr. Janet Mackenzie is the founder of Mackenzie WoundCare Experts. A former chief medical officer for Vohra Wound Physicians, she also practiced plastic surgery and wound care for many years in a private practice setting. After obtaining a master's degree in education, she completed her medical education at the University of Pennsylvania Perelman School of Medicine.

Dr. Mackenzie trained in general surgery at Dartmouth Hitchcock Medical Center and plastic surgery at McGill University. She holds board certification in the American Board of Plastic Surgery, American Board of Wound Management, and American Academy of General Physicians. She also holds a Certificate in Leadership and Management from the Wharton Graduate School of Business.

### **Naushira Pandya, MD, CMD, FACP**

Dr. Naushira Pandya is professor and chair of the Geriatrics Department at Nova Southeastern University's Kiran C. Patel College of Osteopathic Medicine and project director of the HRSA-funded NSU South Florida Geriatrics Workforce Enhancement Program. Board certified in internal medicine, geriatrics, and endocrinology and metabolism, she is a certified medical director and geriatrics fellowship program director. Dr. Pandya has created a thriving academic and clinical department comprising nursing homes, medical director leadership, ACGME-accredited geriatrics fellowships, two geriatrics clinics, as well as strong interprofessional institutional and community partnerships.

At a state level, she is first vice president of the Broward County Area Agency on Aging and past-board member of FMDA – The Florida Society for Post-Acute and Long-Term Care Medicine and remains active in governance issues affecting the post-acute long-term care setting.

Dr. Pandya is past-president of PALTmed – The Society for Post-Acute and Long-Term Care Medicine and past-chair of the interdisciplinary Clinical Practice Committee. She has participated in and led in the development of multiple clinical guidelines and position statements and is recognized for her work in the area of diabetes in the elderly, as well as best practices in the long-term care continuum. On a national level, she was a panelist in the White House Conference on Aging and in the White House Conference on Antibiotic Stewardship and served on the Physician's Advisory Committee for the National Quality Forum and as a member of the College of Surgery Coalition for Quality in Geriatric Surgery. She is a board member of the National Association for Geriatric Education and a member of the HHS Advisory Committee on Interdisciplinary and Community-Based Linkages. Dr. Pandya holds the distinction of being a Fulbright Senior Specialist Scholar.

### **Meenakshi Patel, MD, FACP, MMM, CMD**

Dr. Meenakshi Patel is a clinical associate professor at Wright State University in Dayton, OH, and Ohio Heritage University of Osteopathic Medicine in Athens, OH. She is also a practicing physician at Valley Medical Primary Care as well as a principal investigator at Valley Medical Research and medical director at several nursing homes.

She teaches internal medicine and geriatrics to medical students, internal medicine and family medicine residents, and geriatric fellows. She is involved in phase 2 and 3 clinical trials for various agents for a number of indications.

Dr. Patel has been very active with the American Medical Directors Association in several roles, including as a board member, member of multiple committees, and writing clinical practice guidelines on the management of diabetes in the long-term care setting. She is also faculty for the core curriculum developed by PALTmed/PALTC for physicians seeking certification as medical directors. She has also served as president of the Ohio Medical Directors Association.

Dr. Patel earned her medical degree at the University of Bombay, India. She completed a residency in internal medicine at Sinai Hospital in Baltimore, MD, and is board certified in internal medicine, geriatrics, and hospice and palliative care. She received a master's degree in medical management from Tulane University, in New Orleans, LA.

### **Anita Rajasekhar, MD, MS, FACP**

Dr. "Raj" Rajasekhar is a professor of medicine in the Division of Hematology/Oncology at the University of Florida in Gainesville, where she completed her medical degree and master's degree in clinical investigation. A clinician and clinical investigator with a focus on classical hematology, Dr. Raj's primary clinical interests include diagnosis and treatment of thrombotic and bleeding disorders. Her research has focused on the prevention and treatment of venous thromboembolism. She is the adult medical director of the UF Hemophilia Treatment Center, an active member of the American Society of Hematology, and serves on the Board of Directors for the Anticoagulation Forum.

### **Kenya Rivas, MD, FAAFP, CMD**

Dr. Kenya Rivas is an assistant team lead medical director for Home & Community Care Transitions at UnitedHealthcare. She is responsible for post-acute and long-term care management of the geriatric members and for creating educational content in geriatrics as co-chair of the Education Committee.

Dr. Rivas works collaboratively with groups across the state to improve the quality of life of the geriatric population. She completed her family medicine residency and the geriatric fellowship program at AdventHealth, Orlando, FL, in 2009, joining the Dr. Kiran C. Patel College of Osteopathic Medicine after completing her fellowship program. She served as an assistant professor in geriatrics and was promoted to vice chair of the Geriatrics Department. She was actively involved in the development of geriatrics grants at the university setting.

Dr. Rivas has been lecturing in the field of geriatrics at local, national, and international family medicine and geriatrics conferences since 2009. She has been published in peer-reviewed journals like BMJ, AAFP, and JPALTmed and co-authored a chapter titled "Evaluation and Management of the Older Adult with Chronic Kidney Disease" in Primary Care: Clinics in Office Practice in 2014.

Dr. Rivas was key in the successful implementation of two quality improvement projects in a long-term care facility — for the management of diabetes mellitus in nursing home residents under strict insulin regimen and for the establishment of a successful antimicrobial stewardship program. An active member of PALTmed – The Society for Post-Acute and Long-Term Care Medicine, she serves on the Education Committee and has chaired the Poster Committee since 2022. On the state level, Dr. Rivas remains an active member of FMDA and served on the Board of Directors, co-chairs the Journal Club, and was chair and program director of the Education Committee.

### **Christa Roman, MSHS**

Christa Roman is the national director of long-term care partnerships for VITAS Healthcare. In this role, she leads the strategy for the nursing home and assisted-living segments and acts as the subject matter expert on related regulatory, compliance, and licensure requirements.

She earned her certification from the National Council of Certified Dementia Practitioners and has served the hospice and senior living industry for more than 25 years. With her vast knowledge in this space, she is regularly consulted by her industry peers on current issues and trends in long-term care.

Early in her career, she was an admissions director for a rehab facility and developed relationships with acute care case managers, assisted-living reps, hospices, and other senior care organizations. From there, she worked as a hospice community liaison, securing contracts and developing key accounts throughout the continuum of care.

For 15 years, Christa held the role of senior memory care advisor/marketing director for a memory care/assisted-living community. She assisted the executive director with day-to-day operations while also building relationships and implementing marketing initiatives.



### **Elizabeth Ruegg, LCSW, CT, CAP, CT, CCFS, CUSPS, C-AAIS, CAAP**

Dr. Elizabeth Ruegg is a faculty member in the Master of Social Work program at Saint Leo University in Saint Leo, FL. She earned an MSW at Fordham University in New York and completed her doctoral training at Simmons University in Massachusetts. Her doctoral research focused on the mechanisms of effectiveness in canine-assisted psychotherapy. She is a licensed clinical social worker, certified addictions professional, clinical traumatologist, college and university suicide prevention specialist, certified animal-assisted intervention specialist, and certified animal-assisted psychotherapist. Dr. Ruegg authors a monthly blog in *Psychology Today* about animal-assisted psychotherapy.

### **Dana Saffel, PharmD, CPh, BCGP, FASC**

Dr. Dana Saffel is president and CEO of PharmaCare Strategies, a market development firm that specializes in assisting pharmaceutical manufacturers and health care providers in the appropriate utilization of key products in the senior care channel. PharmaCare Strategies focuses on the challenges of successfully navigating post-acute care settings, including care transitions from home to hospital to nursing facility and back into the community, with the goal of improving patient outcomes.

Earlier, she was vice president of United Pharmacy Services, now Pruitt Pharmacy, the pharmacy division of PruittHealth. In that role she developed services and directed both operational and clinical staff serving over 15,000 nursing facility, assisted-living facility, correctional, and developmentally disabled residents throughout Georgia, Florida, North Carolina, South Carolina, and Virginia.

Dr. Saffel is active in many areas of senior care-focused professional organizations such as ASCP, PALTMed, AGS, AMCP, AADNS, and AHCA, and is a frequent lecturer at national and regional meetings. She also presents on health care policy, regulatory challenges, and reimbursement issues affecting the long-term care industry. She is a past member of the American Society of Consultant Pharmacists Board of Directors and past chair of the Florida chapter of that organization.

### **Joseph W. Shega, MD**

Dr. Joseph Shega is board-certified in geriatric and hospice and palliative medicine and maintains an academic appointment at the University of Central Florida as an associate professor of medicine. The first 15 years of his career was in academic medicine at Northwestern University and the University of Chicago doing clinical care, education, and research including NIH funding around serious illness and dementia care. For the past 10 years, Dr. Shega has practiced in Central Florida as a regional medical director, national medical director, and chief medical officer for VITAS Healthcare.

In his current role, Dr. Shega has been instrumental in adapting a mobile-first platform to bring technology to the bedside in patients' homes to improve clinical care through enhanced clinical documentation, medication management, care coordination, and novel interventions such as virtual reality. He is co-managing editor for *Essential Practices in Hospice and Palliative Medicine* and has over 50 peer-reviewed publications focusing on the care of persons with serious illness. He works with medical trainees across the state of Florida, including at the University of Central Florida and University of Miami, as well as a faculty member at the ACGME-accredited fellowship in hospice and palliative medicine at University of Central Florida and Naples Community Hospital.

### **Kimberly Smoak, MSH, OIDP**

Kim Smoak has been with the Agency for Health Care Administration since August 1995. She is the deputy secretary of the Health Care Policy and Oversight Division, which licenses and/or certifies and regulates 37 providers, including hospitals, nursing homes, assisted-living facilities, and home health agencies. She is also the state survey agency director for the State of Florida and holds a Master of Science degree in health with the program emphasis in aging studies. She is also a qualified intellectual disability professional (QIDP).

### **Niharika Suchak, MBBS, MHS, FACP, AGSF, LSSGB**

Dr. Niharika Suchak is a clinician-educator and associate professor in the Department of Geriatrics at Florida State University College of Medicine (FSUCOM) in Tallahassee, FL. She earned her master's in clinical epidemiology at the School of Hygiene and Public Health at Johns Hopkins University and completed her internal medicine residency and geriatric medicine fellowship at Baltimore's Union Memorial Hospital. She is board certified through the American Board of Internal Medicine (ABIM) in internal medicine, geriatric medicine, and hospice and palliative medicine.

Dr. Suchak serves as director of interprofessional education, education director of geriatrics, and faculty lead for the geriatrics rotation for TMH internal medicine residents, course director for the hospice elective, and medical director of FSU TeleHealth practice at FSUCOM. In addition, she serves as the director of medical education and research for Big Bend Hospice in Tallahassee. She previously served as director of Year 1 Clinical Skills at FSUCOM and has extensive clinical and leadership experience including clinical program development in a multitude of health care environments. She has provided and coordinated patient care in a variety of settings including office, hospital, nursing home, rehabilitation facility, hospice, assisted living, and house calls. She has organized geriatrics consultation programs with sub-specialties such as oncology, surgery, orthopedics, and gynecology.

Dr. Suchak is chair of the Florida Department of Health Alzheimer's Disease Research Grant Advisory Board and co-chair of the American Geriatrics Society Special Interest Group in International Activities. A past-president of the Florida Geriatrics Society (FGS) and current chair of the FGS Education Committee, she is a member of the FMDA – The Florida Society for Post-Acute and Long-Term Care Medicine Education Committee. Dr. Suchak serves as a member of the American Board of Internal Medicine (ABIM) Geriatric Medicine Longitudinal Assessment Approval Committee and has previously served as a member of the ABIM Geriatric Medicine Board Exam Committee. She is a fellow of the American Geriatrics Society and American College of Physicians. Dr. Suchak has a strong interest in medical education of learners and practicing clinicians of multiple health professions, with expertise in curriculum development, clinical skills, interprofessional education, telehealth, advance care planning, palliative care, and the use of simulation as a tool for medical education.

With a passion for inclusivity in the workplace, she is a member of the BBH Diversity and Inclusion Council, FSUCOM Council on Diversity and Inclusion, and American Medical Women's Association Anti-Racism Committee.

She has been the recipient of many awards including multiple listings in Best Doctors in America. In 2016 she received the Outstanding Senior Faculty Educator Award by FSUCOM. In 2012 she received the Clinician of the Year Award by AGS. Dr. Suchak has presented regionally, nationally, and internationally on various geriatric medicine, hospice and palliative care, and medical education topics.

### **Athena Theodosatos, DO**

Dr. Athena Theodosatos received her medical degree from the University of Medicine and Dentistry of New Jersey School of Osteopathic Medicine (now Rowan-Virtua SOM). She trained in family medicine, public health, and dermatology and has published articles on geriatric skin diseases, as well as preventative dermatology, and occupational dermatology skin diseases.

She speaks annually for the fellows in geriatric medicine at Advent Health in Winter Park, FL, on dermatology in the long-term care settings and is affiliated with Advent Health Apopka. She treats patients with skin conditions of all ages but has a passion for caring for the skin needs of the elderly population.

Dr. Theo is recognized by her peers and patients as always providing a caring environment to evaluate and treat her patients with special attention, ensuring they are given the time they need to answer questions and understand their diagnosis and treatment plans.

### **Jacqueline Vance, RNC, BSN, IP-BC, CDONA/LTC, FACDONA**

Jacqueline Vance is the senior director of clinical innovation and education at Mission Health Communities in Tampa, FL. She is a board-certified gerontological nurse and infection preventionist, long-term care director of nursing administration, certified dementia care practitioner, Lean Black Belt Six Sigma Professional, and has a certificate of mastery in antibiotic stewardship. She also serves as an independent legal nurse consultant, expert witness, and long-term care and geriatric nurse consultant through Vance Consulting Service in Tampa, FL. She is on the board of the Beneficiary and Family Centered Care-Quality Improvement Organization and president of the Board of Directors for the National Transitions of Care Coalition. She is a member of several organizations including the National Association of Directors of Nursing Administration in Long-Term Care, PALTmed, and sits on the AHCA Clinical Practice Committee and Behavioral Health Subcommittee.

A national speaker on topics focused on care improvement for the elderly, Ms. Vance has authored multiple articles and manuals on that theme, including chapters in *Nursing Home Litigation and Nursing Malpractice* (third edition). She is a 2012 APEX Award of Excellence winner for her blog, "The Real Nurse Jackie."

### **Cassandra Vonnies, DNP, APRN, GNP-BC, AOCNP, CPHQ, FAHA**

Dr. Cassandra Vonnies is director-at-large of GAPNA and the Nurses Improving Care for Healthsystem Elders coordinator for geriatric oncology at Moffitt Cancer Center in Tampa, FL. A member of the GAPNA Communications Team, she recently received first place with her poster presentation at the GAPNA Annual Conference in San Antonio, TX. The title of her poster was "Using a 4Ms Model for Inpatient Fall and Injury Prevention in an Age-Friendly Cancer Center."

### **Kamal Wahab, MD**

Dr. Kamal Wahab earned a degree in medicine at University of Balamand Faculty of Medicine and Medical Sciences in Lebanon and completed a residency in family medicine at the American University of Beirut Medical Center. He is currently the associate medical director for VITAS in Gainesville, FL.

**Kristin L. Wulff MD**

Dr. Kristin Wulff is a surgeon who specializes in wound care and integrative/functional medicine. After decades of trying to heal complex wounds in a critically ill population, Dr. Wulff sought to understand why these patients were so ill in the first place. During that time, she started having her own health issues, which weren't easily solved with medications that often made her feel worse.

She learned about A4M, and through a rigorous board certification, learned how to take a more integrative/functional approach to health by focusing on stress, hormones, nutrition, exercise, better sleep practices, and gut health.

Health and wellness were the missing link that her critically ill patients never had. By digging into the root cause of patient issues and placing patients in the driver's seat of their own journey, they recover quicker and healthier, without masking their issues with lots of medications.

**Robert A. Zorowitz, MD, MBA, FACP**

Dr. Robert Zorowitz is regional vice president of Health Services for the Northeast Region of Humana. Previously, he was senior medical director for the Downstate NY Market for Optum, overseeing its Institutional Special Needs Plan, and medical director and attending physician at several nursing facilities in Atlanta and New York City. He has practiced in both the hospital inpatient and office settings.

A graduate of Albany Medical College, Dr. Zorowitz completed his residency in internal medicine at Long Island Jewish Medical Center and geriatric fellowship at The Mount Sinai Hospital, both in New York City. He completed his master of business administration at The Goizueta Business School at Emory University in Atlanta, GA. He is board certified in internal medicine, geriatric medicine, and hospice/palliative care medicine and is certified as a medical director by the American Board of Post-Acute and Long-Term Care Medicine.

For the last 15 years, Dr. Zorowitz has been the advisor for the American Geriatrics Society to the AMA CPT Editorial Panel. As part of that work, he was a member of the working group that revised the CPT Evaluation and Management code descriptors.




**PSYCH HEALTH ASSOCIATES**

24/7 PSYCH SUPPORT: (321) 732-5617

**QUALITY-DRIVEN PSYCHIATRY SUPPORT**

Psych Health Associates is setting a new standard for quality-driven psychiatric care, ensuring that facilities and patients have access to the results and customized care they deserve.

-  Personalized psychiatry for full mental wellness.
-  Simplifying complex care management with compliance.
-  Helping patients thrive while keeping facilities compliant.



24/7 SUPPORT    PHAPSYCH.COM    (321) 732-5617

**Physician-led,  
patient-centered.**

**An ACO for your  
long-term care residents.**

[Soundphysicians.com/sltcm-aco](https://soundphysicians.com/sltcm-aco)



**SOUND**

**Sound Long-Term  
Care Management**

*An Accountable Care Organization*

## Parking Options at the Signia by Hilton Bonnet Creek

### Self-Parking for Hotel Guests

Upon arrival to the Signia by Hilton Bonnet Creek, please follow the signage to the Self-Parking Garage, the first right after the main entrance drive, just past the Disney Bus stop. If you are staying overnight at the hotel, your parking rate is auto adjusted upon departure and will show on your folio as the discounted parking rate of \$20.00 per day/night. If you are planning on moving your vehicle during the conference dates, please use your hotel room key to enter and exit the garage. The parking rate will automatically be adjusted on your final receipt upon check-out.

### Daily Drive-ins

Upon arrival to the Signia by Hilton Bonnet Creek, please follow the signage to the Self-Parking Garage, the first right after the main entrance drive, just past the Disney Bus stop. Please pull a ticket and register for the conference at the FMDA desk in the Floridian West Foyer. You will receive a chaser ticket, which you will need to enter upon departure. The chaser ticket will adjust the daily parking rate to a discounted \$20.00 per day/night. This process will need to be repeated daily.

The Self-Parking Garage is not attended. Payment will need to be made at the check-out gate.



[www.x.com/joinfmda](http://www.x.com/joinfmda)



[www.facebook.com/joinFMDA](http://www.facebook.com/joinFMDA)



[www.linkedin.com/company/florida-medical-directors-association](http://www.linkedin.com/company/florida-medical-directors-association)

## We've Gone Social and So Should You!

**Social Media Action Contest:** We've gone social! Be sure to "Like" us on Facebook, "Follow" us on Twitter, and "Connect" with us on LinkedIn to stay in the know with all that transpires within FMDA!

Visit any of our social media pages and your likes, follows, comments, photos, and videos will enter you for a chance to win a \$25 gift card on Friday, Saturday, and Sunday during the annual conference.



### "And Then What?" Challenge

Be the first to share an idea or pearl used in your practice area from the FMDA 2024 Best Care Practices conference.

Tell us what went well and what did not. First to post will win a gift basket.



*Please attend these lunch programs.*

---

Friday, Nov. 1, 2024 • 12:10-1:10 p.m. Floridian KL  
PRODUCT THEATER LUNCH\* (NON-CME/CPE/CE)

***Prioritizing TD in Long-Term Care:  
 Treatment Considerations for Patients in LTC Settings***

► Donald Vollmer, MD; *Medical Director, Hendersonville, TN*

– Sponsored by  **NEUROCRINE**  
 BIOSCIENCES

---

Saturday, Nov. 2, 2024 • 12:15-1:15 p.m. Floridian KL  
PRODUCT THEATER LUNCH\* (NON-CME/CPE/CE)

***Agitation Associated with Dementia  
 Due to Alzheimer's Disease: An Expert Discusses  
 Disease Impact and Management Considerations***

This program will cover the prevalence, impact, and clinical presentation of agitation associated with dementia due to Alzheimer's disease. In addition, the audience will review the current clinical care landscape of agitation associated with dementia due to Alzheimer's disease.

► Meenakshi Patel, MD, FACP, MMM, CMD; *Physician, Valley Medical Primary Care, Centerville, Ohio; Clinical Associate Professor, Wright State University School of Medicine, Fairborn, Ohio; and Clinical Associate Professor, Ohio Heritage University of Osteopathic Medicine, Athens, Ohio*

– Sponsored by  Otsuka  Lundbeck 

\*CE/CME credit is not offered for these programs.

# Thank You!

In Appreciation of our Annual Conference Sponsors

**33<sup>rd</sup> Annual Conference Diamond Sponsor**



**Bronze Grande Sponsor**

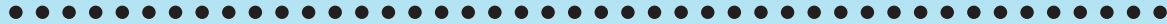


Psych Health Associates  
Our PEAK PERFORMANCE PROVIDES EXTRAORDINARY SUPPORT & OUTSTANDING RESULTS FOR YOU!

**Bronze Grande Sponsor**



Sound Long-Term Care Management  
AN ACCOUNTABLE CARE ORGANIZATION



**Vitas Healthcare**  
Saturday's Continental Breakfast



**The Rose Program**  
Name Badge Holders



**Vitas Healthcare**  
Welcome Reception in the Exhibit Hall



**Vitas Healthcare**  
Refreshment break on Thursday afternoon



**The Kaplan Family**  
President's Wine & Cheese Reception



**Psych Health Associates**  
Refreshment break in the Exhibit Hall on Saturday



**GAPNA**  
Coffee Break



**Vitas Healthcare**  
Tote Bags



Sound Long-Term Care Management  
AN ACCOUNTABLE CARE ORGANIZATION

**Sound Long-Term Care Management**  
Coffee Break



Oct. 31-Nov. 3, 2024



**Best Care Practices**  
In the Post-Acute & Long-Term Care Continuum



**2024 Conference Program**

1

# Schedule of Events

Thursday, Oct. 31, 2024

## THURSDAY, OCT. 31

8:15 a.m.-4:45 p.m. Floridian Foyer  
Registration & Information

### OPTIONAL PRE-CONFERENCE WORKSHOPS

*Show Me Some Skin! Knowledge and Skills for PALTC Skin and Wounds*

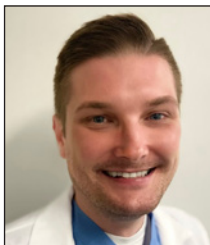
9-11:30 a.m. Floridian KL

#### ▶ 101 Bedside Wound Care Delivery: Beyond the Slough!

(2.0 hours plus two 15-minute breaks)



Shark Bird



Timothy-Keith S. Earley



Hiral Gallimore



Janet Mackenzie



Kristin Wulff

- ▶ Shark Bird, MD, CMD; *President, FMDA*
- ▶ Timothy Keith S. Earley, MSN, RN, NP-C; *Nurse Practitioner, Vohra Wound Physicians, Miramar, FL*
- ▶ Hiral Gallimore, MD; *General Burn Surgery, Hollywood, FL*
- ▶ Janet Mackenzie, MD; *Corporate Ambassador, Cinesteam; Founder and Chief Medical Officer, Mackenzie WoundCare Experts*
- ▶ Kristin Wulff, MD; *General Surgeon, Ormond Beach, FL*

#### Moderators:

Brianna Wynne, MD; Program Director, Education Committee, FMDA; and Shark Bird, MD, CMD, CWSP; President, FMDA; Member, Education Committee, FMDA

11:30 a.m.-12:15 p.m.

Lunch on Your Own

12:15-3:15 p.m.

Floridian KL

#### ▶ 102 Practical Workshop on Geriatric Skin Diseases Commonly Seen in PALTC

(2.5 hours plus two 15-minute breaks)

- ▶ Athena Theodosatos, DO; *Board-Certified Physician and Dermatology Specialist, Orlando, FL*



Athena Theodosatos

**Moderators:** Angel Tafur, MD, CMD; Chair, FMDA; Member, Education Committee, FMDA; and Michelle Lewis, DNP, MSN, ARNP, FNP-BC, GNP-BC; Member, Education Committee, FMDA; President, FL-GAPNA

## START OF CONFERENCE

3:25-4:25 p.m.

Floridian I

#### ▶ 103 Immunizations in Long-Term Care

(1 hour)

- ▶ James Dickens, PharmD; *Consultant Pharmacist, Omnicare*

**Moderator:** Melanie Trigo, PharmD; Member, Education Committee, FMDA



James Dickens

4:30-5:30 p.m.

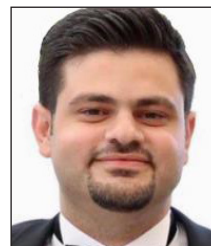
Floridian I

#### ▶ 104 Opioid Conversion in Older Adults with Severe Pain

(1 hour)

- ▶ Kamal Wahab, MD; *Medical Director, Vitas Healthcare, Gainesville, FL*

**Moderator:** Kenya Rivas, MD, CMD, AGSF; Member, Education Committee, FMDA



Kamal Wahab



# Schedule of Events

Friday, Nov. 1, 2024

2

## FRIDAY, NOV. 1

6:30 a.m.-5:30 p.m. **Floridian Foyer**  
Registration & Information

7-7:45 a.m.

**Floridian J**



THE FLORIDA SOCIETY  
FOR POST-ACUTE AND  
LONG-TERM  
CARE MEDICINE

### FMDA Annual Membership Meeting

6:45-7:55 a.m.

**Floridian Foyer**

### Continental Breakfast

7:55-8:05 a.m.

**Floridian GHI**

### President's Welcome

Shark Bird, MD, CMD

8:05-9:05 a.m.

**Floridian GHI**

**105** National Transitions of Care Coalition  
(NTOCC): Reducing Avoidable Hospital Readmissions  
(1 hour)



Jacqueline Vance



Cheri A. Lattimer

- ▶ Jacqueline Vance, RNC, BSN, IP-BC, CDONA/LTC, FACDONA; *President, NTOCC*
- ▶ Cheri A. Lattimer, RN, BSN; *Executive Director, NTOCC*

**Moderator:** Elizabeth Hames, DO, CMD;  
Member, Education Committee, FMDA

9:10-10:10 a.m.

**Floridian GHI**

**106** PALTmed Public Policy  
Update  
(1 hour)

- ▶ Alex Bardakh, MPP, PLC, CAE; *Senior Director, Advocacy and Strategic Partnerships, PALTmed – Post-Acute and Long-Term Medical Association*



Alex Bardakh

**Moderator:** Brian Kiedrowski, MD, MBA, CPE;  
Member, Education Committee, FMDA

10-10:30 a.m.

**Floridian GHI**

### Coffee Break – Sponsored by the Florida Chapters of GAPNA

10:20-11:20 a.m.

**Floridian GHI**

**107** Prognosis Before Planning  
(1 hour)

- ▶ Leonard Hock, DO, CMD, MACOI, FAAHPM; *Palliative Consultant, Winter Park, FL*



Leonard Hock

**Moderator:** Diane Sanders-Cepeda, DO, CMD; Immediate Past-President; Member, Education Committee, FMDA

11:25 a.m.-12:10 p.m.

**Floridian GHI**

**108** Diabetes Management in  
PALTC – A Brief Update  
(.75 hour)

- ▶ Naushira Pandya, MD, CMD, FACP; *Professor and Chair, Department of Geriatrics, Dr. Kiran C. Patel College of Osteopathic Medicine, Nova Southeastern University (NSU), Davie, FL*



Naushira Pandya

**Moderator:** Jennifer Moses, DNP;  
Member, Education Committee, FMDA

3

# Schedule of Events

Friday, Nov. 1 and Saturday, Nov. 2, 2024

12:10-1:10 p.m.

Floridian KL

PRODUCT THEATER LUNCH\*  
(NON-CME/CPE/CE)

Prioritizing TD in  
Long-Term Care: Treatment  
Considerations for Patients  
in LTC Settings

- ▶ Donald Vollmer, MD; *Medical Director, Hendersonville, TN*  
– Sponsored by *Neurocrine*



Donald Vollmer

1:10-2:10 p.m.

Floridian DEF

**GRAND OPENING OF  
TRADE SHOW  
AND POSTER PRESENTATIONS**

2:15-3:15 p.m.

Floridian GHI

▶ **109** Endocrinology Pearls for the  
PALTc Practitioner



Naushira Pandya



Elizabeth Hames



Meenakshi Patel

(1 hour)

- ▶ Naushira Pandya, MD, CMD, FACP; *Professor and Chair, Department of Geriatrics, Dr. Kiran C. Patel College of Osteopathic Medicine, NSU, Davie, FL*
- ▶ Elizabeth Hames, DO, CMD; *Medical Director, Optum for Post-Acute Care*
- ▶ Meenakshi Patel, MD, FACP, MMM, CMD; *Valley Medical Research, Centerville, OH*

**Moderator:** Deb Danforth, DNP, APRN, FAANP; Member, Education Committee, FMDA

3-3:30 p.m.

Floridian GHI

**Coffee Break – Sponsored by Sound  
Long-Term Care Management**

3:20-4:20 p.m.

Floridian GHI

▶ **110** An Update on Geriatric  
Syndromes in LTC  
(1 hour)

- ▶ Rajeev Kumar, MD, CMD; *Delta Team Medical Director, Optum at Home; President, PALTmed – The Society for Post-Acute and Long-Term Care Medicine*



Rajeev Kumar

**Moderator:** Rick Foley, PharmD, CPh, BCGP, FASC; Member, Education Committee, FMDA

4:30-6 p.m.

Floridian DEF

Exhibit Hall Welcome Reception  
*Refreshments sponsored by  
VITAS Healthcare –  
33<sup>rd</sup> Annual Conference Diamond Sponsor*

## SATURDAY, NOV. 2

7:30 a.m.-6 p.m.

Floridian Foyer

Registration & Information

7:30-8:30 a.m.

Floridian DEF

**Continental Breakfast in Exhibit Hall  
with Trade Show and Poster Presentations**  
**Sponsored by: VITAS Healthcare –  
33<sup>rd</sup> Annual Diamond Sponsor**

8:30-8:35 a.m.

Floridian GHI

**Greetings from PALTmed Executive Director  
Michelle Zinnert, CAE**

Wireless access in the Conference Center meeting rooms:



**Network: Bonnet Creek\_Meeting**  
**Password: FMDA2024**

# Schedule of Events

4

## Saturday, Nov. 2, 2024

8:35-10:05 a.m.

Floridian GHI

### ▶▶ 111 National Leaders Forum (1.5 hours)



Rajeev Kumar



Robert Leffler



Cassandra Vonnes

- ◀ PALTmed – Post-Acute and Long-Term Medical Association;  
Rajeev Kumar, MD, CMD; *President*
  - ◀ American Society of Consultant Pharmacists;  
Robert Leffler, RPh, BCGP, FASCP;  
*Region C Director*
  - ◀ Gerontological Advanced Practice Nurses Association; Cassandra Vonnes, DNP FAHA GNP-BC; AOCNP CPHQ; *Director at Large*
- Moderator:** Shark Bird, MD, CMD; President, FMDA;  
Member, Education Committee, FMDA

10:05-11:05 a.m.

Floridian DEF

**Break in Exhibit Hall  
with Trade Show and Poster Presentations –  
Sponsored by Psych Health Associates**

11:10 a.m.-12:10 p.m.

Floridian GHI

### ▶▶ 112 Best Practices to Optimizing Patient End-of-Life Outcomes (1 hour)



Joseph Shega



Christa Roman

- ▶ Joseph Shega, MD; *Executive Vice President and Chief Medical Officer, VITAS; Associate Professor of Medicine, University of Central Florida, Orlando, FL; Co-Managing Editor, Essential Practices in Hospice and Palliative Medicine*
- ▶ Christa Roman, MSHS; *National Director of Long-Term Care Partnerships, VITAS*

**Moderator:** Leonard Hock Jr., DO, MACOI, CMD; Past-President, FMDA; Member, Education Committee, FMDA

12:15-1:15 p.m.

Floridian KL

### PRODUCT THEATER LUNCH\* (NON-CME/CPE/CE)

**Agitation Associated with  
Dementia  
Due to Alzheimer's Disease:  
An Expert Discusses Disease  
Impact and Management  
Considerations**



Meenakshi Patel

- ▶ Meenakshi Patel, MD, FACP, MMM, CMD; *Physician, Valley Medical Primary Care, Centerville, OH; Clinical Associate Professor, Wright State University School of Medicine, Fairborn, OH; and Clinical Associate Professor, Ohio Heritage University of Osteopathic Medicine, Athens, OH*  
– Sponsored by **Otsuka America Pharmaceutical, Inc., and Lundbeck**

\* **Product Theaters:** CE/CME credit is not provided for these programs.

5

# Schedule of Events

## Saturday, Nov. 2, and Sunday, Nov. 3, 2024

1:20-2:50 p.m.

Floridian GHI

### 113 Advance Directives 2024 Update (1.5 hours)



David Alan LeVine



Eric S. Kane

► David Alan LeVine, MD, CMD; *Medical Director, Chief Medical Officer, Menorah Life, St. Petersburg, FL*

► Eric S. Kane, Esq.; *Eric S. Kane, P.L., Aventura, FL*

**Moderator:** F. Michael Gloth, MD, FACP, AGSE, CMD; Member, Education Committee, FMDA; President, FGS

2:55-3:55 p.m.

Floridian GHI

### 114 State Regulatory Update (1 hour)

► Kimberly R. Smoak, MSH, QIDP; *Deputy Secretary, Agency for Health Care Administration*

**Moderator:** Lauren Tafur, ARNP; Member, Education Committee, FMDA



Kimberly R. Smoak

### CONCURRENT SESSIONS

4-5 p.m.

Floridian K

### 115 Medicare Billing & Coding Update (1 hour)

► Robert A. Zorowitz, MD, MBA, FACP; *Regional Vice President, Health Affairs, Northeast, Humana*

**Moderator:** Alfonso Gonzalez-Rodriguez, MD; Vice President, FMDA; Member, Education Committee, FMDA



Robert A. Zorowitz

4-5 p.m.

Floridian L

### 116 Strategies for Obtaining Needed Medications When Health Plans Restrict Access (1 hour)

► Dana Saffel, PharmD; *President, CEO, PharmaCare Strategies, Panama Beach, FL*

**Moderator:** Padma Vedantam, MD; Member, Education Committee, FMDA



Dana Saffel

5-6:15 p.m.

Floridian J

*President's Wine & Cheese Reception*  
Presentation of FMDA's Robert Kaplan Quality Champion Award and Recognition of Poster Presenters  
*Robert Kaplan Quality Champion Award is sponsored by the Kaplan Family.*

## SUNDAY, NOV. 3

7:15 a.m.-12 p.m.

Floridian Foyer

Registration &amp; Information

6:30-7:25 a.m.

Taylor

### Conference Planning Committee Review & Wrap-up Breakfast Meeting

Open to all members interested in learning more about how we plan, implement, and evaluate our annual conference.

Breakfast will be served — please RSVP.

7:15-8:45 a.m.

Floridian GHI

### Continental Breakfast

# Schedule of Events

6

## Sunday, Nov. 3, 2024

7:30-8:30 a.m.

Floridian GHI

### ▶▶ 117 Anticoagulants in Older Adults

(1 hour)

- ▶ Anita Rajasekhar, MD, MS, FACP; *Adult Director, UF Hemophilia Treatment Center, University of Florida College of Medicine, Division of Hematology/Oncology, Gainesville, FL*



Anita Rajasekhar

**Moderator:** Simone Minto-Pennant, PharmD, BCPS, CPh; Member, Education Committee, FMDA

8:35-10:05 a.m.

Floridian GHI

### ▶▶ 118 Geriatric Literature Review

(1.5 hours)

- ▶ Niharika Suchak, MBBS, MHS, FACP, AGSF, LSSGB; *Director of Interprofessional Education and Education, Director of Geriatrics, Florida State University College of Medicine; Director, Medical Education and Research, Big Bend Hospice, Tallahassee, FL; Chair, Education Committee, FMDA*



Niharika Suchak

**Moderator:** Laurie Sheffield Workman, ARNP, DNS; Member, Education Committee, FMDA

10:10-11:10 a.m.

Floridian GHI

### ▶▶ 119 Psychotropic Stewardship: Stay Compliant with Current Regulations

(1 hour)

- ▶ Pari Deshmukh, MD, FASA, FASAM; *Triple Board-Certified Psychiatrist; Medical Director, Balanced Wellbeing, Melbourne, FL*



Pari Deshmukh

**Moderator:** Elizabeth Hidlebaugh, MD; Member, Education Committee, FMDA

11-11:30 a.m.

Floridian GHI

### Coffee Break – Sponsored by VITAS Health Care

11:15 a.m.-12:30 p.m.

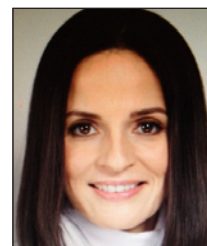
Floridian GHI

### ▶▶ 120 Animal-Assisted Therapy in PALTC

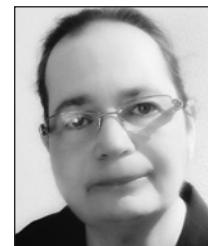
(1.25 hours)



Elizabeth Hames



Kenya Rivas



Elizabeth Ruegg

- ▶ Elizabeth Hames, DO, CMD; *Medical Director, Optum for Post-Acute Care*
- ▶ Kenya Rivas, MD, FAAFP, CMD; *Medical Director, Optum/UnitedHealth Group*
- ▶ Elizabeth Ruegg, DSW, LCSW, CT, CAP, CT, CCFS, CUSPS, C-AAIS, CAAP; *Full-time Faculty, MSW Program, Saint Leo University, St. Leo, FL*

**Moderator:** Niharika Suchak, MBBS, MHS, FACP, AG; Chair, Education Committee, FMDA

12:30 p.m.

### END OF CONFERENCE

Announcements, Door Prizes, etc.

– Please note that the speakers and topics for this meeting are subject to change without notice.



THE FLORIDA SOCIETY  
FOR POST-ACUTE AND  
LONG-TERM  
CARE MEDICINE

**JOINT  
PROVIDERSHIP**



POST-ACUTE AND LONG-TERM CARE  
MEDICAL ASSOCIATION

**Attention all attendees seeking  
continuing education credits  
- regardless of your profession -  
Credit Claim Instructions**

**To claim credit: Scan the QR Code Below**



- Scan the QR Code with your mobile device.
- Or visit: <https://bit.ly/FMDABCP2024>
- Only evaluate each session you attended and complete the online evaluation process.
- Click the **Save** button at the end of the evaluation to save your progress and continue anytime. You will receive an email with a link to continue.
- Click **Submit** once you complete the entire evaluation.
- Remember, you must complete the entire evaluation to record the hours earned and receive your Certificate of Attendance by email from FMDA.
- FMDA will report the hours you earn directly to PALTmed (AMDA).
- FMDA will report the hours you earn directly to CE Broker if appropriate.

**Pharmacists:** Thank you for completing the online evaluation. General Pharmacist CEs and Consultant Pharmacist CEs are provided by the Association for Medication Education (AME). AME is accredited as a provider of continuing pharmacy education by the Accreditation Council for Pharmacy Education (ACPE). AME abides by the ACPE Accreditation Standards for Continuing Pharmacy Education. To earn pharmacist CEs please refer to the packet each pharmacist was provided upon arrival at registration.

## *Faculty & Education Committee Disclosures*

Speakers are required to provide verbal disclosure prior to each talk. If the learner perceives any bias toward a commercial product or service, please report this to the Society's staff. According to the Society and ACCME policy, all those in a position to control content are required to disclose any relevant financial relationships. Please note that in addition to being presented with disclosure information about faculty, the same disclosure information is required of all Education Committee members — our planning committee. Where there are no financial interests indicated, the faculty or planning committee member had none to report. In the spirit of full disclosure, no member of this committee is a compensated conference speaker at Best Care Practices in the Post-Acute and Long-Term Care Continuum 2024. No one with the ability to control content of this activity has a relevant relationship with an ineligible company.

## **Parking Options at the Signia by Hilton Bonnet Creek**

### **Self-Parking for Hotel Guests**

Upon arrival to the Signia by Hilton Bonnet Creek, please follow the signage to the Self-Parking Garage, the first right after the main entrance drive, just past the Disney Bus stop. If you are staying overnight at the hotel, your parking rate is auto-adjusted upon departure and will show on your folio as the discounted parking rate of \$20.00 per day/night. If you are planning on moving your vehicle during the conference dates, please use your hotel room key to enter and exit the garage. The parking rate will automatically be adjusted on your final receipt upon check-out.

### **Daily Drive-ins**

Upon arrival to the Signia by Hilton Bonnet Creek, please follow the signage to the Self-Parking Garage, the first right after the main entrance drive, just past the Disney Bus stop. Please pull a ticket and register for the conference at the FMDA desk in the Floridian West Foyer. You will receive a chaser ticket, which you will need to enter upon departure. The chaser ticket will adjust the daily parking rate to a discounted \$20.00 per day/night. This process will need to be repeated daily.

The Self-Parking Garage is not attended. Payment will need to be made at the check-out gate.



# 2023 Conference Photos



# 2024 Annual Trade Show

## Exhibitors

ACADIA Pharmaceuticals

ARKRAY USA

Balanced Wellbeing

CapSource Solutions Billing

Cemag Care

ChartPath

Cornerstone Hospice

Florida Geriatrics Society

FL-GAPNA

MDOps

MainPointe Pharmaceuticals

Medtrition

Moderna

Neurocrine Biosciences

Otsuka America Pharmaceutical.

PointClickCare

Psych Health Associates

PyschU.org

Saisystems Health

Skilled Wound Care

Sound Long-Term Care Management

Teva Pharmaceuticals

The Rose Program

Thrive Behavioral Sciences

Viatrix

VITAS Healthcare

Wilkes University

***Show your support by visiting these exhibitors,  
and be eligible to win great door prizes!***



# 2024 Annual Trade Show Exhibitors



## ACADIA Pharmaceuticals

Heather Highfield  
Executive LTC Specialist  
4650 Links Village Dr., A104  
Ponce Inlet, FL 32127  
Phone: (407) 399-0361  
heather.highfield@acadia-pharm.com

Acadia is trailblazing breakthroughs in neuroscience to elevate life. We are at the forefront of healthcare, fighting for breakthroughs in our science, our therapies, and the way we work, but also in the lives of the people we serve. At Acadia, we are committed to our purpose: We fight disease so more you shines through.



## ARKRAY USA

Melissa Ritchie  
Marketing Specialist  
5182 W. 76th St.  
Minneapolis, MN 55439  
Phone: (612) 357-2937  
ritchiem@arkrayusa.com

Established in 1960, ARKRAY has pioneered products to ensure that people who have diabetes, and the health professionals who care for them, can better manage the condition. ARKRAY is a leader in the blood glucose monitoring market with a dominant market share in long-term care. For healthcare providers, this means cutting-edge and reliable products combined with superior customer support.



## Balanced Wellbeing (OA)

Kathleen Miller  
Director of Strategic Growth and Business Development  
3200 SW. 34th Ave., Ste. 701  
Ocala, FL 34474  
Phone: (407) 619-9870; Fax: (888) 248-4348  
kathleenmiller@balancedwellbeingllc.com

Balanced Wellbeing is a medical psychiatric/psychotherapy practice providing services in SNF, ALF, and group homes. Our providers are highly credentialed and board certified, led by our CEO and medical director, triple board-certified psychiatrist Dr. Pari Deshmukh, "Dr. Desh." Dr. Desh has focused on improving residential life and facility compliance.



## CapSource Solutions Billing (OA)

Christy Petru  
President  
14550 W. State Hwy. 29  
Liberty Hill, TX 78642  
Phone: (512) 515-0065  
cpetru@capsourcesolutions.com

CapSource Solutions is a full-service billing and consulting firm specializing in long-term care. Transparency, reporting, and robust analytics are key to a successful partnership. We identify strategies to maximize your bottom line, providing support and expertise in specific areas managing the entire revenue cycle from start to finish.



## Cemag Care

Clément Dubois  
Business Developer  
55 rue Turbigio  
Paris, France  
Phone: (+33) 06 04 15 71 54  
c.dubois@cemagcare.com

Cinesteam® is a cinnamon-based anti-odor dressing. This secondary dressing effectively addresses the persistent issue of malodorous wounds by utilizing the properties of cinnamon. It works immediately and continues to perform well, even in the presence of exudates. FDA approved, it has already delivered remarkable results for numerous patients.



## ChartPath

Casey Smalley  
Event Manager  
11211 Taylor Draper Ln.  
Austin, TX 78759  
Phone: (512) 788-9191  
casey.smalley@livtech.com

ChartPath is an innovative, cloud-based EHR solution designed specifically for long-term and post-acute care (LTPAC) practices. Built with ease-of-use and efficiency in mind, ChartPath streamlines clinical workflows, enhances patient care, and simplifies compliance management. Our latest addition, the ChartPath Automation Marketplace, offers a growing selection of integrated tools and services to further customize and automate your practice, allowing providers to focus more on care and less on administration. Stop by to discover how ChartPath can transform your practice with cutting-edge solutions tailored for LTPAC providers!

*Continued on the next page →*

## 2024 Annual Trade Show Exhibitors



### Cornerstone Hospice

Mindy Wright  
 Director of Business Development  
 5655 S. Orange Ave.  
 Orlando, FL 32809  
 Phone: (321) 289-9300  
 wrightm2@chaptershealth.org

Cornerstone Hospice, a Chapters affiliate, is not a place but a philosophy of care with an emphasis on quality of life. We address the physical, emotional, and spiritual needs of the patients in our care. We provide comprehensive pain and symptom management, assisting patients in living comfortably and pain-free in their own surroundings.



### Florida Geriatrics Society

Peggy Crowley  
 Executive Director  
 PO Box 1403  
 Land O'Lakes, FL 34639  
 Phone: (813) 996-0322  
 exec@floridageriatricssociety.org

The Florida Geriatrics Society is a statewide membership-based nonprofit 501(c)3 organization founded in October 1989. We are the recognized geriatrics society and state affiliate of the American Geriatrics Society (AGS) and the Florida Medical Society (FMA). The FGS is dedicated to supporting physicians, nurses, and other allied healthcare professionals in improving the quality of life and advancing the health care of older adults through education, advocacy, research, networking, and improving public awareness of professionals involved with caring for older adults.



### FL-GAPNA (S)

Michelle Lewis, DNP  
 FL-GAPNA President  
 255 Dryden Cir.  
 Cocoa, FL 32926  
 Phone: (321) 536-9089  
 arnpmichelle@yahoo.com

Supports nurse practitioners caring for older adults.



### MainPointe Pharmaceuticals, LLC

David Reis  
 CEO and President of DVR Healthcare Consulting  
 2604 River Green Cir.  
 Louisville, KY 40206  
 (513) 941-8364  
 dvrhealthcareconsult@fuse.net

MainPointe Pharmaceuticals specializes in sales and innovative distribution of consumer health differentiated brands and valued supplements, often utilizing unique technologies to improve patient outcomes and enhance consumer wellness. Branded products include Tuxarin ER, along with OTC products of Nexafed and Slo-Niacin. A trusted partner with more than 50 years of industry experience.



### MDOps

Matthew Almgren  
 Development  
 188 Cranberry Ct.  
 Melville, NY 11747  
 Phone: (631) 617-8659  
 malmgren@mdops.com

MDOps offers MDLog, a clinical documentation app with built-in instant dictation that makes practitioners more efficient and their organizations more profitable. More than just dictation, MDLog also offers:

- Direct integration with PointClickCare and American HealthTech
- eRx
- Chronic Care Management module
- Patient/family/caregiver portal
- And more. Come see what's new with MDLog.



### Medtrition

Michelle Baker  
 Regional Sales Manager  
 PO Box 5387  
 Lancaster, PA 17606  
 Phone: (704) 607-0179  
 mbaker@medtrition.com

Medtrition, Inc., founded in 1986, revolutionized dysphagia care with instant food thickeners and innovative pureed food programs. Today, it leads the medical foods industry, offering solutions for wound healing, malnutrition, GI health, and more, serving healthcare professionals and institutions in the U.S. and over 50 countries worldwide.

*Continued on the next page →*

## 2024 Annual Trade Show Exhibitors



### Moderna

Meredith Mark  
Specialty Markets  
5 Vaughn Dr.  
Princeton, NJ 08540  
Phone: (617) 852-2137  
meredith.mark@modernatx.com

Moderna, Inc., is a biotechnology company pioneering messenger RNA (mRNA) therapeutics and vaccines. Moderna's mRNA platform builds on continuous advances in basic and applied mRNA science, delivery technology, and manufacturing, and has allowed the development of therapeutics and vaccines for infectious diseases, immuno-oncology, rare diseases, cardiovascular diseases, and auto-immune diseases.



### Neurocrine Biosciences

Brian Stembridge  
Vice President of Sales  
12780 El Camino Real  
San Diego, CA 92130  
Phone: (904) 870-2981  
bstembridge@neurocrine.com

Neurocrine Biosciences is a leading neuroscience-focused, biopharmaceutical company with a simple purpose: to relieve suffering for people with great needs but few options. We are dedicated to discovering and developing life-changing treatments for patients with under-addressed neurological, neuroendocrine, and neuropsychiatric disorders. For more information, visit [neurocrine.com](http://neurocrine.com).



### Otsuka America Pharmaceutical, Inc.

Hannah Buechele  
Account Manager  
508 Carnegie Center Dr.  
Princeton, NJ 08540  
Phone: (317) 646-3761  
hannah\_buechele@avanthc.com

Otsuka America Pharmaceutical, Inc., is an innovative healthcare company that commercializes Otsuka-discovered and in-licensed products in the U.S., with a focus on neuroscience, nephrology, and medical devices.



### PointClickCare

Lesley Hinton  
Event Manager, Senior Care  
5570 Explorer Dr.  
Mississauga, ON L4W0C4  
Phone: (437) 329-3131  
lesley.hinton@pointclickcare.com

PointClickCare is a leading healthcare technology platform enabling meaningful care collaboration and real-time patient insights.



### Psych Health Associates (S) (OA)

Aubry Baird  
Vice President  
525 Technology Park, Ste. 109  
Lake Mary, FL 32746  
Phone: (407) 304-7487  
abaird@phapsych.com

Psych Health Associates provides exceptional psychiatric support across Florida, specializing in personalized care for patients in various settings, including skilled nursing and rehabilitation facilities. Our dedicated team collaborates with facility staff to enhance patient outcomes, ensuring 24/7 support and tailored interventions to address individual mental health needs.



### PsychU.org

Mike Crooks  
LTC Medical Science Liaison  
953 Marbury Ct. SW.  
Marietta, GA 30064  
Phone: (404) 825-9042  
mike.crooks@otsuka-us.com

PsychU.org is a free community and online resource library for mental health featuring the latest developments, research, innovative programs, decision support tools, psychiatric scales, clinical trends, and more. Nurses and providers in long-term care can access webinars, articles, interviews, and slide decks for clinical education and staff training.

*Continued on the next page →*

## 2024 Annual Trade Show Exhibitors



### Saisystems Health

Mario Pittore  
Marketing Lead  
5 Research Dr.  
Shelton, CT 06484  
Phone: (203) 567-5232  
marketing@saisystems.com

Saisystems Health supports post-acute long-term care (PALTC) practices with TheSNFist™ suite of services and products, meticulously crafted by and for PALTC professionals. These solutions provide the advantages of a comprehensive back office without the associated overhead, empowering PALTC practices to maintain their independence and achieve growth.



### Skilled Wound Care

Andrea Albornoz  
Business Development Manager  
12021 Wilshire Blvd., #745  
Los Angeles, CA 90025  
Phone: (310) 386-5060  
andrea@skilledwoundcare.com

Skilled Wound Care has revolutionized chronic wound management with its comprehensive skin integrity program. Built on four major pillars: professional services, educational services, quality assurance, and risk reduction. Our approach ensures exceptional care and positive outcomes for patients and facility staff nationwide. We are dedicated to enhancing skin health through innovation and a commitment to excellence.



### Sound Long-Term Care Management (S) (OA)

Giuliana Vaca-Tricerri  
Events Manager  
1498 Pacific Ave., Ste. 500  
Tacoma, WA 98402  
Phone: (704) 390-2103  
gvacatricerri@soundphysicians.com

Sound Long-Term Care Management (SLTCM) is a Medicare Shared Savings Program accountable care organization focused exclusively on Medicare beneficiaries in long-term care. SLTCM measurably improves quality, satisfaction, and financial performance through exceptional patient care, performance management expertise, and deep investments in our people, partners, and technology. Participating physicians, practitioners, and long-term care operators earn shared savings of up to 35% with no downside risk.



### Teva Pharmaceuticals

Richard Barrineau  
RSM  
135 Kingsland Way  
Piedmont, SC 29673  
Phone: (843) 437-6506  
richard.barrineau@tevapharm.com

Teva Pharmaceutical Industries Ltd. has been developing and producing medicines to improve people's lives for more than a century. We offer generic, biosimilars, and innovative medicines with a portfolio consisting of over 3,600 products in nearly every therapeutic area. Learn more at [www.tevapharm.com](http://www.tevapharm.com).



### The Rose Program (S)

David Thimons, MD  
CEO  
2000 Cliff Mine Rd.  
Pittsburgh, PA 15275  
Phone: (878) 201-3312; Fax: (878) 201-3584  
jlhartle@pcmanetwork.com

The Rose Program is trying to redefine what palliative medicine means to the post-acute space across the country. This is done by making palliative care available to all patients with advanced illness and suffering, with the results of respecting patients' values, minimizing unnecessary hospitalizations and medications, and greatly reducing overall cost.



### Thrive Behavioral Sciences

Stephen Lomonico, NHA, CRM  
President/CEO  
5510 N. Hesperides St.  
Trinity, FL 34655  
Phone: (727) 418-2567  
lomonico@thrivebehavioralsciences.com

Thrive Behavioral Sciences is a leading provider of psychiatric and psychological care in the post-acute care setting in Florida. Owned and operated by a Nursing Home Administrator, we think like you think and help to care for your patients and keep the facility in compliance.

*Continued on the next page →*

## 2024 Annual Trade Show Exhibitors



**Viatrix**

Anna Harris  
 NA Regional Conventions  
 1000 Mylan Blvd.  
 Canonsburg, PA 15317  
 Phone: (724) 485-6910  
 anna.harris@viatrix.com

VIATRIS™ is a new kind of healthcare company, committed to providing access to medicines, advancing sustainable operations, developing innovative solutions, and improving patient outcomes. Formed in 2020 through the combination of Mylan and Upjohn, Viatrix brings together best-in-class scientific, manufacturing, and distribution expertise with proven regulatory, medical, and commercial capabilities.



**VITAS Healthcare**

Lillian Valeron  
 Director of Market Development  
 2201 Lucien Way, Ste. 100  
 Maitland, FL 32751  
 Phone: (407) 875-0028; Fax: (877) 848-2702  
 cristian.piraquive@vitas.com

A hospice pioneer since 1978, VITAS® Healthcare is the nation’s leading provider of end-of-life care. Patient-centered, comfort-focused care by an interdisciplinary VITAS team reduces hospital readmissions, length of stay, and overall healthcare costs while improving quality metrics and patient satisfaction. Call 800.93.VITAS. Visit VITAS.com. Download the mobile referral app at VITASapp.com.



**Wilkes University**

Jennifer Moses  
 Faculty of Practice  
 84 W South St.  
 Wilkes-Barre, PA 18766  
 Phone: (570) 408-4071  
 victoria.dutzar@wilkes.edu

Since 1933, Wilkes has been preparing students for lifelong success. The Passan School of Nursing offers fully online programs designed to improve patient outcomes as a nurse practitioner through specialization in one of three high-demand concentrations: adult gerontology primary care, family, and psychiatric/mental health. Our doctoral programs include a PhD program and DNP program.

(S) = Sponsor  
 (OA) = Organizational Affiliate

## Elevate FMDA With Your Support.



**Join Today**



**Become a Volunteer**

**Donate Now**



Best Care Practices in the Post-Acute and Long-Term Care Continuum 2024  
 Joint Provided by FMDA & PALTmed



# 101 – Bedside Wound Care Delivery: Beyond the Slough!

(2.0 hours plus two 15-minute breaks)

**Shark Bird, MD, CMD**

**Timothy Keith S. Earley, MSN, RN, NP-C**

**Hiral Gallimore, MD**

**Janet Mackenzie, MD**

**Kristin Wulff, MD**

## LEARNING OBJECTIVES

At the conclusion of this program, attendees should be able to:

1. Properly identify and classify pressure wounds.
2. Discuss key characteristics of venous vs arterial ulcers.
3. Manage diabetic neuropathic ulcers.
4. Evaluate vascular flow in lower extremities.
5. Use proper application of compression dressings.

## NOTES

---

---

---

---

---

---

---

---

---

---

---

---

---

---

---

---

---

---

---

---

---

---

---

---

---

Thursday, Oct. 31, 2024 ❖ 9-11:30 a.m.

# 102 – Practical Workshop on Geriatric Skin Diseases Commonly Seen in PALTC

(2.5 hours plus two 15-minute breaks)

**Athena Theodosatos, DO**

## LEARNING OBJECTIVES

At the conclusion of this program, attendees should be able to:

1. Discuss general statistics of the increasing number of skin diseases including skin cancers in the geriatric population.
2. Identify the top 10 most common skin diseases seen in this population and go over treatments.
3. Describe skin biology and the intrinsic and extrinsic factors involved with aging skin.
4. Perform dermatology procedures to be demonstrated during the hands-on training portion of the workshop.

## NOTES

---

---

---

---

---

---

---

---

---

---

---

---

---

---

---

---

---

---

---

---

---

---

---

---

---

Thursday, Oct. 31, 2024 ❖ 12:15-3:15 p.m.

# 103 – Immunizations in Long-Term Care

(1.0 hour)

James Dickens, PharmD

## LEARNING OBJECTIVES

At the conclusion of this program, attendees should be able to:

1. Review the latest Advisory Committee on Immunization Practices (ACIP) recommendations and updates to ensure informed vaccination process.
2. Describe effective strategies for addressing vaccine hesitancy to enhance vaccination rates.
3. Discuss immunization resources and websites to increase vaccine knowledge selection.

## NOTES

---

---

---

---

---

---

---

---

---

---

---

---

---

---

---

---

---

---

---

---

---

---

---

---

Thursday, Oct. 31, 2024 ❖ 3:25-4:25 p.m.

# 104 – Opioid Conversion in Older Adults with Severe Pain

(1.0 hour)

Kamal Wahab, MD

## LEARNING OBJECTIVES

At the conclusion of this program, attendees should be able to:

1. Highlight the history of each opioid.
2. Convert between different opioid pain medications.
3. Describe the side effects of each opioid.
4. Discuss how to adjust dose and frequency.

## NOTES

---

---

---

---

---

---

---

---

---

---

---

---

---

---

---

---

---

---

---

---

---

---

---

---

Thursday, Oct. 31, 2024 ❖ 4:30-5:30 p.m.

# 105 – National Transitions of Care Coalition (NTOCC): Reducing Avoidable Hospital Readmissions

(1.0 hour)

Jacqueline Vance, RNC, BSN, IP-BC, CDONA/LTC, FACDONA; President, NTOCC

Cheri A. Lattimer, RN, BSN; Executive Director, NTOCC

### LEARNING OBJECTIVES

At the conclusion of this program, attendees should be able to:

1. Identify the barriers to ensuring safe transitions between the various levels of care that contribute to avoidable readmissions.
2. Describe the unique roles that medical directors, directors of nursing, and consultant pharmacists play in ensuring success.
3. Discuss the traits of building a strong interdisciplinary team culture to support quality transitions of care.
4. Review the key interventions for developing a transition plan and improving communication and risk identification across the interdisciplinary team.
5. Identify the available resources to assist with developing and improving transitions of care and reducing avoidable hospital readmissions.

### NOTES

---

---

---

---

---

---

---

---

---

---

---

---

---

---

---

---

---

---

---

---

---

---

---

---

Friday, Nov. 1, 2024 ❖ 8:05-9:05 a.m.

# 106 – PALTmed Public Policy Update

(1.0 hour)

Alex Bardakh, MPP, PLC, CAE

### LEARNING OBJECTIVES

At the conclusion of this program, attendees should be able to:

1. Discuss federal and state activity to improve care in the PALTC environment.
2. Identify ways that medical directors, directors of nursing, and consultant pharmacists can become better advocates for their practice and their patients.
3. Summarize recommendations to improve care in nursing homes.

### NOTES

---

---

---

---

---

---

---

---

---

---

---

---

---

---

---

---

---

---

---

---

---

---

---

---

Friday, Nov. 1, 2024 ❖ 9:10-10:10 a.m.



# 107 – Prognosis Before Planning

(1.0 hour)

Leonard Hock, DO, CMD, MACOI, FAAHPM

## LEARNING OBJECTIVES

At the conclusion of this program, attendees should be able to:

1. Implement improved advance-care planning strategies in long-term care.
2. Train the interdisciplinary team about the importance of and need for advance care planning for the residents.
3. Involve the residents and their loved ones in the decision-making process.
4. Secure the clinical expertise and available options from attending physicians, medical directors, advanced practice nurses, physician associates, directors of nursing, and consultant pharmacists.
5. Facilitate and support a robust advance-care planning program in your facilities that involves the interdisciplinary team.
6. Discuss the effectiveness of prognosis tools.
7. Describe the results of attempted resuscitation.

## NOTES

---

---

---

---

---

---

---

---

---

---

---

---

---

---

---

---

---

---

---

---

---

---

---

---

Friday, Nov. 1, 2024 ❖ 10:20-11:20 a.m.

# 108 – Diabetes Management in PALTC – A Brief Update

(0.75 hour)

Naushira Pandya, MD, CMD, FACP

## LEARNING OBJECTIVES

At the conclusion of this program, attendees should be able to:

1. Reduce use of sliding scale insulin.
2. Simplify treatment regimens by improving knowledge.
3. Incorporate newer agents in the therapeutic regimen.

## NOTES

---

---

---

---

---

---

---

---

---

---

---

---

---

---

---

---

---

---

---

---

---

---

---

---

Friday, Nov. 1, 2024 ❖ 11:25 a.m.-12:10 p.m.



# 109 – Endocrinology Pearls for the PALTC Practitioner

(1.0 hour)

Naushira Pandya, MD, CMD, FACP

Elizabeth Hames, DO, CMD

Meenakshi Patel, MD, FACP, MMM, CMD

### LEARNING OBJECTIVES

At the conclusion of this program, attendees should be able to:

1. Employ treatment recommendations from current guidelines for management of osteoporosis.
2. Differentiate between primary and secondary hypothyroidism and determine the management of hyperparathyroidism.
3. Identify clinical or laboratory findings indicating adrenal dysfunction and initiate a preliminary evaluation.
4. Recognize that patients with refractory gastrointestinal symptoms may have an underlying endocrine disorder.

## NOTES

---

---

---

---

---

---

---

---

---

---

---

---

---

---

---

---

---

---

---

---

---

---

---

---

Friday, Nov. 1, 2024 ❖ 2:15-3:15 p.m.

# 110 – An Update on Geriatric Syndromes in LTC

(1.0 hour)

Rajeev Kumar, MD, CMD

### LEARNING OBJECTIVES

At the conclusion of this program, attendees should be able to:

1. Define and differentiate the main characteristics of the 3D Geriatric Syndromes: Dementia, Delirium, and Depression.
2. List the underlying risk factors and most common causes of the 3Ds.
3. Discuss the medications most commonly used to treat the 3Ds and their potential side effects.
4. Describe the most effective non-pharmacologic strategies to manage the 3Ds.

## NOTES

---

---

---

---

---

---

---

---

---

---

---

---

---

---

---

---

---

---

---

---

---

---

---

---

Friday, Nov. 1, 2024 ❖ 3:20-4:20 p.m.

# 111 – National Leaders Forum

(1.5 hours)

Rajeev Kumar, MD, CMD  
Robert Leffler, RPh, BCGP, FASCP  
Cassandra Vonnes, DNP FAHA  
GNP-BC AOCNP CPHQ

### LEARNING OBJECTIVES

At the conclusion of this program, attendees should be able to:

1. Describe where the PALTC system is heading, significant challenges the industry will face in the future, and some of the steps that need to be taken.
2. Discuss opportunities for professional organizations to partner with each other and related LTC/geriatrics organizations to improve patient care.
3. Identify regulations or reimbursement issues that may conflict with best-care practices in PALTC.
4. Summarize key factors that will impact (both positively and negatively) nursing homes in the next 5-10 years.
5. Review approaches to enhance and measure quality of care at the intersection of acute and post-acute care.

### NOTES

---

---

---

---

---

---

---

---

---

---

---

---

---

---

---

---

---

---

---

---

---

---

---

---

Saturday, Nov. 2, 2024 ❖ 8:35-10:05 a.m.

# 112 – Best Practices to Optimizing Patient End-of-Life Outcomes

(1.0 hour)

Joseph Shega, MD  
Christa Roman, MSHS

### LEARNING OBJECTIVES

At the conclusion of this program, attendees should be able to:

1. Describe a novel approach to developing individualized hospice care plans that incorporate medical, psychological, and social support.
2. Discuss how hospice improves nursing home quality while ensuring goal-concordant care helping residents stay in location of choice and out of the ED and hospital.
3. Identify best practices in coordinating hospice and LTC partnership of care through a state survey lens.

### NOTES

---

---

---

---

---

---

---

---

---

---

---

---

---

---

---

---

---

---

---

---

---

---

---

---

Saturday, Nov. 2, 2024 ❖ 11:10 a.m.-12:10 p.m.



# 113 – Advance Directives 2024 Update

(1.5 hours)

David Alan LeVine, MD, CMD  
Eric S. Kane, Esq.

### LEARNING OBJECTIVES

At the conclusion of this program, attendees should be able to:

1. Discuss the importance of proper advance-care planning.
2. Define new terms including AND, PDDO, MAID, POLST, DNAR, ethical will, etc.
3. Describe the role of patient, proxy, surrogate, physician, ethics committee, courts, etc.
4. Distinguish between Appointed Guardian, Health Care Surrogate, Proxy by Statute, and Durable Power of Attorney.
5. Apply knowledge of advance-care planning to actual clinical scenarios.

### NOTES

---

---

---

---

---

---

---

---

---

---

---

---

---

---

---

---

---

---

---

---

---

---

---

---

Saturday, Nov. 2, 2024 ❖ 1:20-2:50 p.m.

# 114 – State Regulatory Update (1.0 hour)

Kimberly R. Smoak, MSH, QIDP

### LEARNING OBJECTIVES

At the conclusion of this program, attendees should be able to:

1. Identify the most commonly cited deficiencies and ways to improve to avoid these areas of non-compliance.
2. Describe how the medical director can assist with oversight to improve these areas of non-compliance.
3. Discuss and review the significant changes to the nursing home regulatory requirements.
4. Review the emergency preparedness and response requirements and the role of the medical director, including federal and state reporting requirements.
5. Summarize recent immediate jeopardy findings for nursing homes and discuss how the role of the medical director, nurse leaders, and pharmacist can help nursing homes identify areas for improvement to avoid immediate jeopardy findings.

### NOTES

---

---

---

---

---

---

---

---

---

---

---

---

---

---

---

---

---

---

---

---

---

---

---

---

Saturday, Nov. 2, 2024 ❖ 2:55-3:55 p.m.

# 115 – Medicare Billing & Coding Update

(1.0 hour)

Robert A. Zorowitz, MD, MBA, FACP

## LEARNING OBJECTIVES

At the conclusion of this program, attendees should be able to:

1. Correctly apply E&M guidelines for medical decision-making.
2. Correctly choose whether to select coding level based on total time or medical decision-making.
3. Describe the differences between payment policy involving reporting and coding guidelines from federal nursing home regulations, such as visit frequency and other requirements.
4. List which services may and may not be performed by telehealth in PALTC.
5. Discuss the requirements for reporting related services in PALTC, including but not limited to face-to-face and non-face-to-face prolonged services.
6. Identify where to find further information on reporting services performed in PALTC.

## NOTES

---

---

---

---

---

---

---

---

---

---

---

---

---

---

---

---

---

---

---

---

---

---

---

---

Saturday, Nov. 2, 2024 ❖ 4-5 p.m.

# 116 – Strategies for Obtaining Needed Medications When Health Plans Restrict Access

(1.0 hour)

Dana Saffel, PharmD

## LEARNING OBJECTIVES

At the conclusion of this program, attendees should be able to:

1. Implement Medicare Part D entitlements that guarantee 30 to 120 days of access to restricted medications before a prior authorization is necessary.
2. Identify important elements that should be included in an explanation of medical necessity to accelerate approval.
3. Identify the language in the Medicare Part D rule, specific to long-term care, to support a request for coverage.
4. Differentiate healthcare providers and clinical records that should be consulted in the prior authorization process before the request is submitted.

## NOTES

---

---

---

---

---

---

---

---

---

---

---

---

---

---

---

---

---

---

---

---

---

---

---

---

Saturday, Nov. 2, 2024 ❖ 4-5 p.m.



# 117 – Anticoagulants in Older Adults

(1.0 hour)

Anita Rajasekhar, MD, MS, FACP

## LEARNING OBJECTIVES

At the conclusion of this program, attendees should be able to:

1. Explain the unique challenges of anticoagulation in older adults, including increased risks of bleeding, frailty, and comorbid conditions common in post-acute and long-term care settings.
2. Demonstrate how to tailor anticoagulation therapy in older adults by applying risk assessment tools (e.g., CHA2DS2-VASc, HAS-BLED) to balance bleeding and thrombotic risks.
3. Evaluate patient cases to differentiate between high-risk and low-risk older adults for anticoagulation and analyze when to adjust or discontinue therapy based on clinical factors.
4. Discuss strategies used to improve interdisciplinary communication among healthcare providers to ensure safer and more effective management of anticoagulation in older adults.

## NOTES

---

---

---

---

---

---

---

---

---

---

---

---

---

---

---

---

---

---

---

---

---

---

---

---

Sunday, Nov. 3, 2024 ❖ 7:30-8:30 a.m.

# 118 – Geriatric Literature Review

(1.5 hours)

Niharika Suchak, MBBS, MHS, FACP, AGSF, LSSGB

## LEARNING OBJECTIVES

At the conclusion of this program, attendees should be able to:

1. Identify areas in clinical medicine where new strong evidence has been uncovered that may affect geriatric practice.
2. Describe the results of a critical appraisal of this evidence, including limitations and pitfalls of published articles.
3. Discuss clinical advances in caring for older adults (including pharmaceutical and non-pharmaceutical interventions) based on a review of recent select peer-reviewed journal articles.
4. Discuss highlights of the 2023 update to the American Geriatrics Society (AGS) Beers Criteria for Potentially Inappropriate Medication (PIM) Use in Older Adults.

## NOTES

---

---

---

---

---

---

---

---

---

---

---

---

---

---

---

---

---

---

---

---

---

---

---

---

Sunday, Nov. 3, 2024 ❖ 8:35-10:05 a.m.

# 119 – Psychotropic Stewardship: Stay Compliant with Current Regulations

(1.0 hour)

Pari Deshmukh, MD, FASA, FASAM

### LEARNING OBJECTIVES

At the conclusion of this program, attendees should be able to:

1. Identify and classify the common psychiatric disorders in skilled nursing facilities.
2. Prescribe an appropriate medication regimen.
3. Monitor the progress of their work.

## NOTES

---

---

---

---

---

---

---

---

---

---

---

---

---

---

---

---

---

---

---

---

---

---

---

---

Sunday, Nov. 3, 2024 ❖ 10:10-11:10 a.m.

# 120 – Animal-Assisted Therapy in PALTC

(1.25 hours)

Elizabeth Hames, DO, CMD  
Kenya Rivas, MD, FAAFP, CMD  
Elizabeth Ruegg, LCSW, CT, CAP, CT,  
CCFS, CUSPS, C-AAIS, CAAP

### LEARNING OBJECTIVES

At the conclusion of this program, attendees should be able to:

1. Describe successful animal-assisted therapy programs in the PALTC continuum.
2. List the clinical benefits of animal-assisted therapy programs to patients in PALTC.
3. Discuss the challenges of animal-assisted therapy programs to the geriatric workforce and PALTC facilities.
4. Identify best practices and strategies for animal-assisted therapy program implementation.

## NOTES

---

---

---

---

---

---

---

---

---

---

---

---

---

---

---

---

---

---

---

---

---

---

---

---

Sunday, Nov. 3, 2024 ❖ 11:15 a.m.-12:30 p.m.





**PSYCH  
HEALTH  
ASSOCIATES**

24/7 PSYCH SUPPORT: (321) 732-5617

## QUALITY-DRIVEN PSYCHIATRY SUPPORT

Psych Health Associates is setting a new standard for quality-driven psychiatric care, ensuring that facilities and patients have access to the results and customized care they deserve.

-  Personalized psychiatry for full mental wellness.
-  Simplifying complex care management with compliance.
-  Helping patients thrive while keeping facilities compliant.



24/7 SUPPORT    PHAPSYCH.COM    (321) 732-5617

# Physician-led, patient-centered.

## An ACO for your long-term care residents.

Soundphysicians.com/sltcm-aco



**SOUND**  
Sound Long-Term  
Care Management

*An Accountable Care Organization*

# Call for Presentations: 2025 Annual Conference

The Education Committee for Best Care Practices in the Post-Acute and Long-Term Care Continuum invites you to submit educational program proposals and abstracts for the 2025 annual conference. Submissions should be based on current trends and best practices in post-acute, long-term care, and geriatrics. Of special interest is emerging clinical information, research, innovations in non-pharmaceutical modification of challenging behaviors, emerging concepts in management and medical direction, and updates on approaches to regulatory compliance. The Committee also seeks proposals that emphasize strategies for successful cooperation with advanced practice nurses, physician assistants, directors of nursing, consultant pharmacists, and administrators, as well as the entire interdisciplinary team.

Year after year, conference evaluations show that a majority of attendees come for the educational programs and the associated continuing-education credits. Our attendees expect clinical topics to be evidence-based with cited references, and management topics to be relevant to their setting and grounded in best practices. For their learning experience, attendees seek opportunities to network with colleagues and engage in interactive presentations through various formats such as point-counterpoint, case-based discussion (Q&A), small groups and/or role play, and practical information for valuable take-home tools such as handouts, key points, guides, or quick tips.

If you have an interest in presenting at the 2025 conference, or know some knowledgeable and excellent speakers, please be directed to our proposal submission page at [www.fmda.org](http://www.fmda.org).

— **Submission Site Opens: Dec. 30, 2024**

— **Speaker Presentation Submission  
Deadline: Feb. 17, 2025**

For information, contact the FMDA business office at [ian.cordes@fmda.org](mailto:ian.cordes@fmda.org) or call (561) 689-6321.



## POSTER SESSION SCHEDULE

Please join our presenters in Floridian DEF

**Friday, Nov. 1, 2024**

1:10-2:10 p.m.

4:30-6 p.m.

**Saturday, Nov 2, 2024**

7:30-8:30 a.m.

10:05-11:05 a.m.

*The Poster Review Committee wishes to thank this year's presenters:*

Current as of Oct. 17, 2024

### **FMDA's 21<sup>st</sup> Annual Poster Presentations**

#### **GI BLEEDING AND ANTI-THROMBOTIC THERAPY AMONG HOSPITALIZED ADULTS 75+**

**Presenter Name:** Spencer Barnes, BS, Medical Student

**Abstract:** Background: Gastrointestinal bleeding (GIB) is prevalent among older adults, particularly those aged 65 and above, with a notable percentage linked to patients with atrial fibrillation (AF) and venous thromboembolism (VTE) due to their use of anti-thrombotic therapies. This study aims to investigate the correlation between prior anti-thrombotic therapy in patients aged 75 and older and their likelihood of hospital readmission within 30 days. We hypothesized that having a prescription for an antithrombotic at admission for GIB would increase the likelihood of returning to the hospital within 30 days of discharge relative to those without a prescription.

**Methods:** Utilizing the Safe Transitions for At-Risk (STAR) patient quality improvement database, we conducted a retrospective analysis of 62,214 patients aged 75 and older hospitalized in Palm Beach County from 2017 to 2020. We identified patients with GIB diagnoses and assessed their anti-thrombotic medication history prior to admission. Chi-squared tests were employed to evaluate the relationship between anti-thrombotic therapy and 30-day hospital readmission rates.

**Results:** Among hospital admissions studied, 332 were on antithrombotic therapy at admission while 1,579 were not. Contrary to our initial hypothesis, older adults with GIB who were on antithrombotic therapy were significantly less likely to be readmitted than those without a prescription for an antithrombotic at admission. GIB was the most common diagnosis on return for both groups.

**Conclusion/Discussion:** This study concludes that antithrombotic therapy was not associated with an increased likelihood of returning to the hospital within 30 days following a GIB event in hospital admissions aged 75 and older in comparison to those without a prescription for an antithrombotic at admission. The most common reason for readmission was recurrent GIB, followed by other complications such as weakness and syncope. Further research is recommended to explore the nuanced relationship between antithrombotic therapy and GIB management in this demographic. Special attention should be directed to anatomical location and initial severity of GIB.

## **THE ASSOCIATION OF FALL RISK SCORES WITH 30-DAY RETURN TO HOSPITAL RATES IN ADULTS AGED $\geq$ 75 FOLLOWING HIP FRACTURE**

**Presenter:** Antonio Da Costa, BS, Medical Student

**Background:** Higher fall risk scores correlate with increased morbidity and mortality in older adults, particularly following major surgeries such as hip fracture repair. This study examines the relationship between pre-operative fall risk scores and 30-day hospital return rates in patients aged 75 and older undergoing hip fracture repair.

**Methods:** This secondary analysis utilized a quality improvement database covering 60,000 admissions of patients aged 75 and older at a 400-bed community teaching hospital from 2017 to 2020. Exclusions included in-hospital deaths and discharge to hospice care. Fall risk was assessed using the Johns Hopkins Fall Risk Scale, categorized as high ( $>16.0$ ) or low ( $\leq 16.0$ ). Outcomes measured included readmissions, observation stays, and emergency department visits within 30 days. Statistical analysis employed chi-square tests ( $p < 0.05$ ).

**Results:** Among 61,193 eligible admissions, 5% involved hip fractures and 5% had high fall risk scores. Of those with hip fractures, 8% had high fall risk scores compared to 5% without fractures. High fall risk scores did not significantly predict 30-day hospital return rates in either group. However, they were associated with longer hospital stays and older patient age ( $p < 0.001$ ).

**Conclusion:** Hip fractures markedly increased hospital return rates among elderly patients. Nevertheless, the fall risk scores examined did not independently forecast 30-day hospital returns, suggesting limited reliability in predicting readmissions in this demographic. Future research should explore alternative predictive factors and validate these findings across diverse populations.

## **CLC FALL PREVENTION PROGRAM: AN INTERDISCIPLINARY APPROACH**

**Authors:** Maryrose De Guzman, DPT; Padma Vedantam, MD; Orlando VA Healthcare System (OVAHCS) Community Living Center (CLC)

**Presenter:** Maryrose De Guzman, DPT; Orlando VA; Physical Therapist, CLC, OT Education and Residency Director

**Abstract:** Increased number of falls were observed in the OVAHCS Community Living Center in FY 2022 higher than VISN 8 and National. A CLC Fall Prevention Workgroup was created in FY 2023 to identify opportunities for improvement and decrease the number of falls. Gaps were detected in areas of purposeful rounding processes, equipment safety, and veteran engagement programs.

The CLC workgroup set a goal to implement an interdisciplinary approach to reduce number of falls by 50% in FY 2024.

Fall champions were identified in each unit who conducted secret shopper rounds through veteran feedback and chart reviews to verify staff knowledge of purposeful rounding. Weekly meetings were held by the interdisciplinary group to review falls, post-fall documentation, and equipment needs. Veterans and staff were educated on safety including use of in situ fall simulation. Veteran engagement programs were reemphasized and personalized care plans were formulated for fall risk veterans.

After implementation of the Fall Prevention Program, total number falls in the CLC per month decreased from 26 in February 2023 to 7 in June 2024. Fall rate per 1,000 BDOC decreased from highest rate of 8.1 in February 2023 to 2.13 in June 2024. For FY 2024, the average CLC fall rate was 3.37 compared to VISN rate 3.54 and National average 4.87. This is an improvement from 2023 when the overall CLC fall rate was 5.0 compared to national average of 4.98 and VISN average of 3.83.

**Conclusion:** Implementation of Fall Prevention Program with interdisciplinary approach has helped to reduce the number of falls in CLC while embracing principles of culture of safety and continuous process improvement while providing safe care to veterans.

## OVERCOMING EXTENSIVE BULLOUS RASH

**Authors:** Stephanie L. Dillon, DO; Brianna Wynne, MD

**Presenter:** Stephanie L. Dillon, DO; Geriatric Fellow

Sometimes, what starts as a routine admission will throw a curve ball and something unexpected happens! When a patient develops a large area of ulcerations after admission for shortness of breath, one must look at what was done, even if appropriate, and keep the differential diagnosis broad.

**Case:** A 71-year-old Caucasian male presented to the ER with dyspnea, fluid retention, and abdominal bloating. Diagnosed with acute heart failure and atrial fibrillation with RVR, he was admitted to the ICU for cardiogenic shock, acute respiratory failure, and shock liver. Treated with guideline-directed therapy, he improved; however, on the day of discharge to inpatient rehab he was documented to have edema and fluid-filled blisters on large portions of his body. In inpatient rehab, a biopsy of a lesion was performed but results were not completely available until after his discharge to the skilled nursing facility. He was plagued with extensive ulcerations all over his body, and it was up to us to determine how to manage the situation.

**Conclusion:** This case is medically interesting due to the extensive nature of the lesions, which is uncommon in the skilled nursing setting. We had the opportunity to try various treatments and coordinate care with dermatology and wound care specialists to facilitate the healing process. Not only was his physical pain difficult, the mental, social, and emotional discomfort was not forgotten. Ultimately, the exact cause of the lesions remained indeterminate, but this case is a reminder of the importance of maintaining dignity for patients and collaboration of an interdisciplinary team to aid in relief of suffering.

## STIMULATING SUCCESS: EARLY ANESTHESIOLOGY SKILLS FOR MEDICAL AND PA STUDENTS

**Authors:** Rachel Cathey, MS4; Michael Grossi, MS2; Dr. Debra Danforth, DNP, APRN, FAANP; Florida State University College of Medicine, Tallahassee, FL

**Presenter:** Michael Grossi, BS; Florida State University College of Medicine, Medical Student (MS2)

**Introduction:** The Florida State University College of Medicine (FSUCOM) Anesthesiology Interest Group has initiated a biannual Anesthesiology Skills Night aimed at enhancing medical education through early clinical exposure. This event equips students with essential anesthesiology skills, providing unique learning opportunities with local anesthesiologists, upperclassmen, and clinical faculty.

**Methods:** The inaugural Skills Night focused on direct laryngoscopy, allowing 20 students (18 medical and 2 PA) to practice fundamental airway management techniques. Building on this foundation, the second event introduced advanced tools, including a McGrath video laryngoscope provided by the local anesthesiology group, and another designed by the organization's president. This time, 64 participants attended (51 medical, 9 PA, 3 masters, and 1 PhD).

**Discussion:** These hands-on experiences enhance practical skills and instill confidence in students as they explore medical specialties. FSUCOM's commitment to early clinical exposure is vital for developing well-rounded physicians. By integrating simulation and skills training into the curriculum, students gain insight into the demands of anesthesiology, fostering a deeper understanding of patient care in intraoperative settings. This approach aligns with contemporary educational practices that emphasize experiential learning as a cornerstone of effective medical training, supporting FSUCOM's mission to prepare medical students for the Florida physician workforce in areas of high need.

**Conclusion:** The recent recognition of FSUCOM's Anesthesia Skills Night by the American Society of Anesthesiologists Medical Student Board in their August 2024 newsletter underscores its significance in advancing medical education. By facilitating interactions with experienced professionals and offering immersive training, Skills Nights enhance student competencies and cultivate interest in anesthesiology, ultimately preparing the next generation of physicians to provide high-quality, patient-centered care.

## **STOP THE DROPPER: MANAGING SUPPLEMENT OVERUSE**

**Authors:** Karley Greer Deason, MS; and Savitri Ramdial, MD, CMD; Tallahassee, FL

**Presenter:** Karley Greer Deason, BS

**Abstract:** Hypercalcemia is a common clinical problem, and its symptoms can vary based on severity, often requiring laboratory testing and patient examination to determine the cause. However, this approach can overlook the importance of obtaining an accurate list of medications and supplements used by the patient. Vitamin D toxicity, driven by the increasing use of over-the-counter supplements, is becoming more prevalent due to accidental overdoses.

This case involves a 67-year-old female with a history of anemia, hypothyroidism, osteoarthritis, and breast cancer, admitted with lab findings of vitamin D >150, potassium 3.1, serum creatinine 2.9, serum calcium 13.5, and hemoglobin 10.6. Despite normal urine studies and renal imaging, oncology was consulted given her history of breast cancer, though imaging was unremarkable. The patient had been taking excessive amounts of vitamin D through a combination of supplements, including 6,000 IU from multivitamins and drops, and 100 mg of calcium D-gluconate from another supplement. She had purchased these after seeing an ad on social media.

The diagnosis was acute kidney injury secondary to hypercalcemia caused by exogenous vitamin D use. This case highlights the need for providers to thoroughly review supplement usage, particularly in assisted living settings where supplements are often excluded from medication lists. Education on supplements is crucial, as patients may self-administer high doses without understanding the risks. Providers must stay informed about the complications of vitamin D toxicity and promote patient education to prevent such adverse outcomes. This case demonstrates the need for a system-based approach to managing medication and supplement lists, especially in senior living facilities, where supplements are often underreported or overlooked.

## **VARICELLA ZOSTER HEPATITIS IN AN IMMUNOSUPPRESSED PATIENT**

**Presenter:** Krishna Brown, MBBS; FSU College of Medicine

**Introduction:** Acute Viral Hepatitis can cause elevated transaminases up to 25 times the upper limit of normal. Well-known causes are the Hepatitis viruses, but less common are the Herpesviridae.

**Vignette:** A 44-year-old previously well-female presented with four days of right upper abdominal pain with malaise, headache, and nausea but without vomiting, fevers, weight loss, jaundice, pale stools, or dark urine. She took no medications or herbal supplements. She is sexually active with one partner. Previously, she drank 15 units weekly but stopped 10 years ago. She denies intravenous drug use. She has no family history of liver disease.

On exam was scleral icterus but no other stigmata of liver disease. She had mild epigastric and right upper quadrant tenderness without peritonism or organomegaly. The rest of the physical exam was normal. Labs showed; total bilirubin 1.2, SGOT 2438, SGPT 1177, ammonia 84, and INR 2.4. Normal Acetaminophen and alcohol levels. HIV positive with a CD4 count of 215. The Hepatitis panel was negative. Abdominopelvic CT was unremarkable. Later HSV, EBV, CMV, and autoimmune panel were negative.

**Clinical course:** She was empirically started on N-acetylcysteine and HAART. Her AST, ALT, and INR rose to 6163, 3131, and 2.9, respectively. She developed a painful vesicular rash in the left axilla and T2 dermatome. Treatment with valacyclovir was initiated and LFTs improved to AST 177, ALT 621, and INR of 1.4.

**Discussion:** Varicella Zoster Virus is a rare cause of acute hepatitis that may manifest as fulminant hepatitis with markedly elevated transaminases and coagulopathy and typically but not exclusively occurs in immunocompromised patients. Prompt ruling out of more common causes is essential and diagnosis is made clinically in the setting of primary or secondary Varicella infection with initiation of appropriate antivirals to decrease mortality.



# Save the Date!

## October 23-26, 2025

# FMDA's 34<sup>th</sup> Annual Conference & Trade Show

 ROSEN  
**SHINGLE CREEK**<sup>®</sup>  
ORLANDO



THE FLORIDA SOCIETY  
FOR POST-ACUTE AND  
LONG-TERM  
CARE MEDICINE



**Best Care  
Practices**  
*In the Post-Acute &  
Long-Term Care Continuum*

FMDA's 34<sup>th</sup> Annual Conference is held in collaboration with the Florida Chapters of Gerontological Advanced Practice Nurses Association, National Association Directors of Nursing Administration, and Florida Geriatrics Society.

Join Today at [www.fmda.org/join-fmda.php](http://www.fmda.org/join-fmda.php)



FMDA—The Florida Society for Post-Acute and Long-Term Care Medicine  
3123 Breakwater Court • West Palm Beach, FL 33411  
(561) 689-6321 • Fax: (561) 689-6324  
[www.fmda.org](http://www.fmda.org)

<u>TIMES</u>	<u>EVENT</u>	<u>LOCATION</u>
8:15 a.m.-4:45 p.m.	Registration & Information	Floridian Foyer
	<b>OPTIONAL PRE-CONFERENCE WORKSHOPS</b>	
	<i>Show Me Some Skin! Knowledge and Skills for PALTC Skin and Wounds</i>	
9-11:30 a.m.	101 – Bedside Wound Care Delivery: Beyond the Slough!	Floridian KL
11:30 a.m.-12:15 p.m.	Lunch on Your Own	
12:15-3:15 p.m.	102 – Practical Workshop on Geriatric Skin Diseases Commonly Seen in PALTC	Floridian KL
	<b>START OF CONFERENCE</b>	
3:25-4:25 p.m.	103 – Immunizations in Long-Term Care	Floridian I
4:30-5:30 p.m.	104 – Opioid Conversion in Older Adults with Severe Pain	Floridian I
	<b>Friday, Nov. 1</b>	
6:30 a.m.-5:30 p.m.	Registration & Information	Floridian Foyer
7-7:45 a.m.	FMDA Annual Membership Meeting	Floridian J
6:45-7:55 a.m.	Continental Breakfast	Floridian
7:55-8:05 a.m.	President's Welcome: Shark Bird, MD, CMD	Floridian GHI
8:05-9:05 a.m.	105 – National Transitions of Care Coalition (NTOCC): Reducing Avoidable Hospital Readmissions	Floridian GHI
9:10-10:10 a.m.	106 – PALTmed Public Policy Update	Floridian GHI
10-10:30 a.m.	Coffee Break – Sponsored by the <b>Florida Chapters of GAPNA</b>	Floridian GHI
10:20-11:20 a.m.	107 – Prognosis Before Planning	Floridian GHI
11:25 a.m.-12:10 p.m.	108 – Diabetes Management in PALTC – A Brief Update	Floridian GHI
12:10-1:10 p.m.	Product Theater Lunch (non-CME/CPE/CE) Prioritizing TD in Long-Term Care: Treatment Considerations for Patients in LTC Settings Sponsored by <b>Neurocrine</b>	Floridian KL
1:10-2:10 p.m.	Grand Opening of Trade Show & Poster Presentations	Floridian DEF
2:15-3:15 p.m.	109 – Endocrinology Pearls for the PALTC Practitioner	Floridian GHI
3-3:30 p.m.	Coffee Break – Sponsored by <b>Sound Long-Term Care Management</b>	Floridian GHI
3:20-4:20 p.m.	110 – An Update on Geriatric Syndromes in LTC	Floridian GHI
4:30-6 p.m.	Exhibit Hall Welcome Reception	Floridian DEF
	<b>Refreshments sponsored by VITAS Healthcare – 33rd Annual Conference Diamond Sponsor</b>	
	<b>Saturday, Nov. 2</b>	
7:30 a.m.-6 p.m.	Registration & Information	Floridian Foyer
7:30-8:30 a.m.	Continental Breakfast in Exhibit Hall with Trade Show & Poster Presentations Sponsored by <b>VITAS Healthcare – 33rd Annual Conference Diamond Sponsor</b>	Floridian DEF
8:30-8:35 a.m.	Greetings from PALTmed Executive Director Michelle Zinnert, CAE	Floridian GHI
8:35-10:05 a.m.	111 – National Leaders Forum	Floridian GHI
10:05-11:05 a.m.	Break in Exhibit Hall with Trade Show & Poster Presentations Sponsored by <b>Psych Health Associates</b>	Floridian DEF
11:10 a.m.-12:10 p.m.	112 – Best Practices to Optimizing Patient End-of-Life Outcomes	Floridian GHI
12:15-1:15 p.m.	Product Theater Lunch (non-CME/CPE/CE) Agitation Associated with Dementia Due to Alzheimer's Disease: An Expert Discusses Disease Impact and Management Considerations Sponsored by <b>Otsuka America Pharmaceutical, Inc., and Lundbeck</b>	Floridian KL
1:20-2:50 p.m.	113 – Advance Directives 2024 Update	Floridian GHI
2:55-3:55 p.m.	114 – State Regulatory Update	Floridian GHI
	<b>CONCURRENT SESSIONS</b>	
4-5 p.m.	115 – Medicare Billing & Coding Update	Floridian K
4-5 p.m.	116 – Strategies for Obtaining Needed Medications When Health Plans Restrict Access	Floridian L
5-6:15 p.m.	<b>President's Wine &amp; Cheese Reception</b> Presentation of FMDA's <b>Robert Kaplan Quality Champion Award</b> and Recognition of Poster Presenters <b>Robert Kaplan Quality Champion Award is sponsored by the Kaplan Family.</b>	Floridian J
	<b>Sunday, Nov. 3</b>	
7:15 a.m.-12 p.m.	Registration & Information	Floridian Foyer
6:30-7:25 a.m.	Conference Planning Committee Review & Wrap-up Breakfast Meeting	Taylor
7:15-8:45 a.m.	Continental Breakfast	Floridian GHI
7:30-8:30 a.m.	117 – Anticoagulants in Older Adults	Floridian GHI
8:35-10:05 a.m.	118 – Geriatric Literature Review	Floridian GHI
10:10-11:10 a.m.	119 – Psychotropic Stewardship: Stay Compliant with Current Regulations	Floridian GHI
11-11:30 a.m.	Coffee Break – Sponsored by <b>VITAS Health Care</b>	
11:15 a.m.-12:30 p.m.	120 – Animal-Assisted Therapy in PALTC	Floridian GHI
12:30 p.m.	<b>END OF CONFERENCE:</b> Announcements, Door Prizes, etc. – Please note that the speakers and topics for this meeting are subject to change without notice.	